



Winda Technology Limited
勝達國際科技有限公司

香港葵涌葵昌路26-38號豪華工業大廈23樓A座2306室
Room 06 Blk A 23/F Hoover Ind Bldg 26-38 Kwai Cheong Rd Kwai Chung N.t Hongkong
Tel:00852-30691882 Fax:00852-30691882 Email:sales@windacadcam.com

隽衣科技(深圳)有限公司

深圳市龍崗區龍城街道龍崗大道中糧祥雲廣場2棟A1801
Room A1801, Block 2, Zhongliangxiangyun Square, Longgang Avenue,
Long cheng street, Longgang District, Shenzhen China
Tel:+86-755-86670789 / +86-755-86128682
Email: sales@windacadcam.com
Web:www.windacadcam.com

在线支持 Online Support
QQ: 2839100845
Wechat: Eva18820983707
Whats app: +8801821265103
Mail: support@windacadcam.com



WinDa 勝達服裝設備綜合手冊 GLOBAL APPAREL EQUIPMENT SOLUTIONS



AUTOMATION:CAD/CAM
RELAXING/INSPECTION
IRONING/OTHER EQUIPMENT

2021
PARTNER
OF YOUR
SUCCESS...

Global Apparel
Equipment Solutions
勝達服裝設備綜合手冊



全球分公司分布
Our worldwide branch offices

中國香港 HongKong China	越南胡志明 Ho Chi Minh Vietnam
中國深圳 Shenzhen China	越南河内 Ha Noi Vietnam
孟加拉達卡 Dhaka Bangladesh	印度尼西亞雅加達 Jakarta Indonesia
孟加拉吉大港 Chattogram Bangladesh	印度尼西亞三寶壟 Semarang Indonesia

Our products have supplied to below brands:



Partner of your success

勝達國際科技有限公司是一家專業從事服裝軟件和設備研發、生產、銷售以及售後為一體的高科技企業，專為服裝加工企業提供服裝成套設備解決方案。我們堅持以客戶需求為導向，持之以恆，不斷加強產品研發以滿足服裝加工企業對高端、特殊以及機電一體化機械設備的需求，為國內外客戶提供性價比卓越的產品。

憑借20多年豐富的服裝行業經驗以及專業的團隊，經過多年的研發，我們的產品涉及整個服裝加工縫前、縫中、整燙和包裝等各個環節，涵蓋了針織、襯衫、西服、牛仔、夾克以及內衣等系列，產品遠銷全球30多個國家和地區：孟加拉、越南、印度尼西亞、印度、泰國、緬甸、柬埔寨、韓國、巴基斯坦、斯里蘭卡、埃塞俄比亞、毛裏求斯、俄羅斯、南非等等。

勝達國際孟加拉、越南、印度尼西亞分公司已在當地運營了10多年，一直為客戶提供快速、專業的服務，有效地幫助客戶提高了工廠的生產效率及最大限度為客戶節省了運營成本。我們專業與敬業的服務贏得了客戶的一致好評。

我們將一如既往，繼續努力為服裝製造業的向前發展貢獻力量。



Winda Technology Limited is a high-tech enterprise specializing in R&D, Manufacturing, Marketing and after-sales of garment CAD/CAM software and equipment. We provide completely equipment solutions for garment processing enterprises. We adhere to customer demand-oriented and constantly strengthen product research and development to meet the needs of high-end, special, mechanical & electrical integration equipment from garment processing enterprises, to provide cost-effective products.

With more than 20 years of rich experience in the garment industry and professional team, after years' efforts in research and development, our products involve the entire garment manufacturing line, such as CAD/CAM, Cutting, Sewing, Ironing, Packaging, serials including Knitting, Shirts, Suits, Jeans, Jackets, Underwear... Our products are popular to export to more than 30 countries and regions around the world: Bangladesh, Vietnam, Indonesia, India, Thailand, Myanmar, Cambodia, South Korea, Pakistan, Sri Lanka, Ethiopia, Mauritius, Russia, South Africa, etc...

Our Bangladesh, Vietnam and Indonesia branches have been operating locally for more than 10 years, providing customers with fast and professional services, effectively helping customers improve the production efficiency and save in operating costs. Our professional and dedicated service has won the praise of our customers.

We will continue to strive to contribute to the development of the garment manufacturing industry.

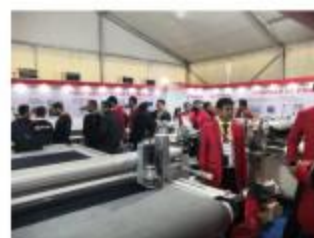


展会实况

Exhibition Promotion



上海展会
Shanghai Cisma Show



孟加拉展会
Bangladesh Exhibiton



越南展会
Vietnam Exhibiton



印度展会
India Exhibiton

合作工厂 Our partner factories



服装CAD/CAM 系统 Garment CAD/CAM System

3D服装设计系统 3D Design System	P01
服装CAD 系统 Garment CAD System	P03
数字化板+喷墨绘图仪 Digitizer+Inkjet plotter	P05
立式喷墨绘图仪+高速服装平板切割机 Cutting Plotter	P07
模板机+激光切割雕刻机 Template Cutter +Laser Cutting and Engraving Machine	P09
激光打标机 Laser Marking Machine	P11
数控模板缝纫机 CNC Template Sewing Machine	P13
拉布机系列 Spreading Machine Series	P15
连续式单层裁(小裁床) Single-ply Auto Cutter	P18
高速自动裁床系列 High Speed Auto Machine	P19
铺布和切割台板 Spreading/Cutting Table	P21
裁切刀系列 Knife Cutter Series	P22

服装后整理设备 Garment Finishing Equipment

验布机+缩水定型机 Inspection Machine +Shrinking and Forming Machine	P23
松布机 Fabric Relaxing Machine	P31
切捆条机系列 Cutting (Slitting) Machine Series	P34
充绒机+内衣设备 Down Filling Machine +Bra Steam Machine	P37
检针机+粘合机 Needle Detector+Fusing Machine	P39
全自动拼接橡筋机 Automatic Rubber Splicing Machine	P44
穿裤绳机 Automatic Dostin Insert Machine	P45
全自动水洗标机 Automatic Washing Label Machine	P48
其他后整理设备 Other Finishing Equipment	P49

烫画/印花机系列 Heat Printing Machine Series P65

整烫设备系列 Ironing Equipment

烫斗系列 Iron Series	P72
抽湿烫台系列 Vacuum Ironing Table	P73

节能和其他高效能设备 Energy Saving & High Efficiency Series

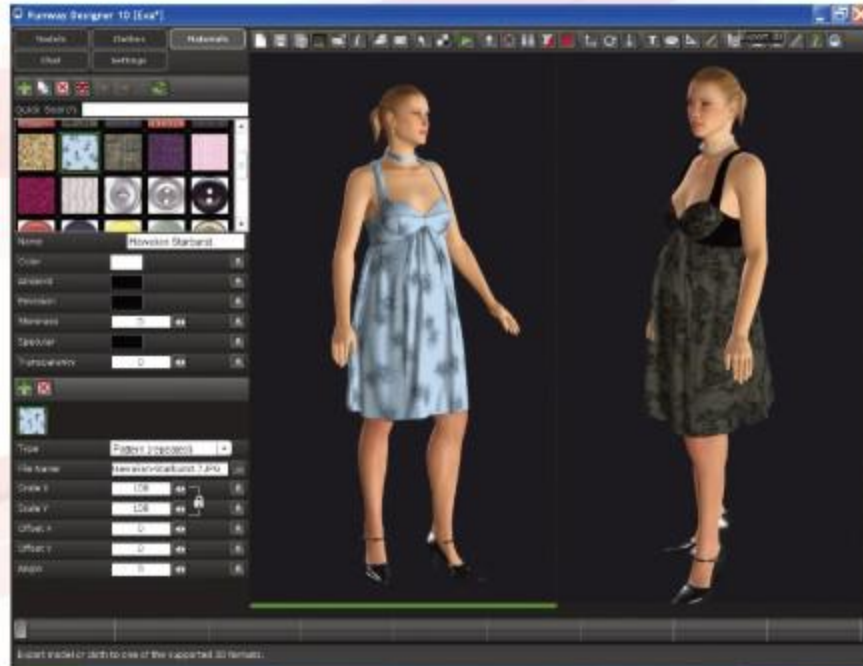
折衫机 Folding Machine	P78
悬挂系统 Hanging System	P81

货架系统+ 服装生产辅助系统

Racking System+ Garment Production Accessory Equipment	P85
--	-----

服装机械配件 Garment Machine Spare Part Series	P91
--	-----

3D Design System 三維虛擬試穿軟件 (3D Runway)



- Perfect combination with PDS software 3D Runway Can be embedded into the sample production PDS software, Truly achieve the synchronization operation from 2D to 3D. The modification of pattern and 3D fitting effect are well combined. You can create templates in PDS. It can be monitored directly in 3D Runway. At the same time, The corrected sample in the PDS will be immediately reflected in the 3D human model.
- 3D RUNWAY可以內嵌到樣版制作PDS軟件中，從而真正實現從2D到3D的同步操作，使平面紙樣的修改和三維虛擬試穿效果得到良好的結合。您可以在PDS中創建樣版材料，可以直接在3D RUNWAY中對其進行監視。并且，在PDS中修正過的樣片，將立即反映在3D人模上。

Fabric simulation system

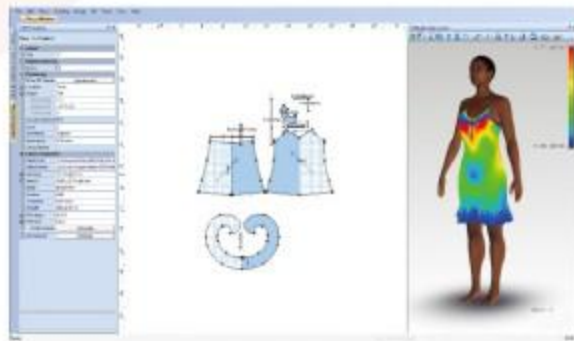
It can be displayed the texture of the fabric& leather, Color relations of materials, and the physical performance of the fabric. Fabrics can be digitally entered into a computer or available through fabric design software. It can get the real embodiment. Special treatment: printing, embroidery, trademark, frosting, washed fabrics logo can be realistic display. Weight, thickness and elasticity of fabric, Stiffness, friction coefficient and surface roughness of fabrics, Physical properties such as the forming ability of fabrics can also be adjusted accordingly, ensure accuracy of 3D fitting.

It can be connected with the most advanced fabric testing system KES, FAST etc.

The test results of fabrics are directly expressed in 3D virtual fitting.

面料模擬系統：

- 可以顯示織物的組織紋理、皮革的質感，材料的配色關係，以及面料的物理性能表現。面料都可以通過數碼設備輸入到電腦中，也可通過面料設計軟件獲得，並得到真實體現。各種特殊面料處理：印花、綉花、商標、磨砂、水洗、LOGO、貼圖等都能逼真顯示。面料的克重、厚度、彈性，面料的剛度，摩擦系數，表面粗糙度，面料的成型能力等物理性能也能對性的調整，確保三維虛擬試穿的準確效果。
- 可以和目前最先進的面料測試系統如KES、FAST等連接，直接將面料的測試結果表達在三維虛擬試穿中。



Mannequins Gallery

Has a detailed mannequin gallery, providing detailed body size adjustment functions, customers can adjust the dimensions of all parts of the human body as

needed, regardless of any particular body type: pregnant women, wasp waist, off-the-shoulder can be perfectly reflected.

Can adjust the model's skin color, facial expression, standing posture, etc.

Can be directly connected with three-dimensional human scanners, reading real human body data, easy to quickly try on.

模特庫：

擁有詳盡的人體模特庫，同時提供詳細的人體尺寸調整功能，客戶可以根據需要對人體各部位的尺寸進行調整，無論任何特殊體型：孕婦，蜂腰，溜肩都能完美體現。

可以調整模特的膚色、面部表情、站立姿態等。

可以和三維人體掃描儀實時連接，讀取真實的人體數據，方便快速試穿。



Virtual Test Wear:

- Wear the clothes you choose or design for your virtual model.
- Simulate the real stitching relationships, Sewn together in a computer setting.
- The sutured sample is worn on the virtual model of suitable size .
- You can change the size of the model or sample, to achieve the best test-wearing effect.

虛擬試穿：

- 為您的虛擬模特兒穿上您選擇或設計的衣服。
- 模擬真實縫合的關係，在電腦裏設置相互縫合。
- 將縫合後的樣片穿在虛擬的對應尺寸的模特兒身上。
- 可以更改模特兒或者樣版的尺寸，達到最佳的試穿效果。



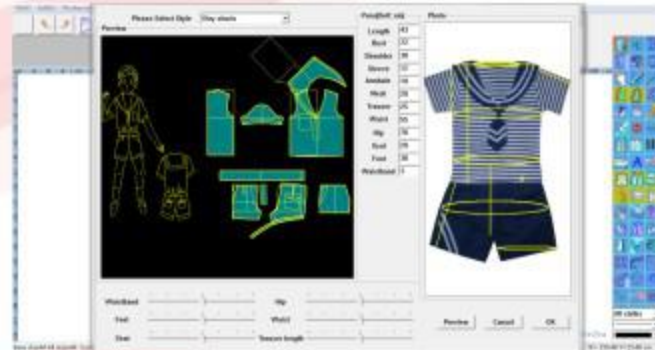


Garment Cad System 服裝CAD系統

Pattern Design System

This is an intelligent pattern design system, its design is base on human-habit, tools are easy to choose and use, it save lot of time for pattern making, professional tools can realize your requirement quickly, inside lot of automatical functions, like automatical pattern, grading, automatic sleeve, patch etc., make your job become easy and not easy to make mistake, after compare, use winda CAD system, the working efficiency can improve 100%~200% compare with manual and 30%~40% more compare with other CAD system.

這是一套非常智能化的打板系統，非常人性化的設計，工具易選易用，大大節約做板時間，專業的工具能夠快速達到您的設計要求，內含多種自動化功能，自動做板，自動放碼，自動做袖子，貼邊等等，大大減輕您的工作強度，而且不容易出錯，經過比較，使用WINDA打板系統，相對手工，工作效率可以提高100%~200%，相對其他CAD可以提高30%~50%。



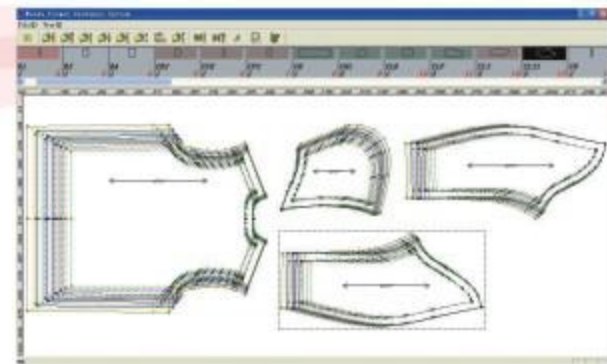
Grading System

The Winda grading system supply automatical and manual grading, quickly, convenient and accurate, the system also supply many tools easy to modify your pattern, you can quickly to switch the pattern and grading module, the pattern in grading can be changed automatically when the design has been changed.

Winda放碼系統符合人手操作習慣，提供自動放碼和手動放碼兩種方式，快捷，方便，準確；提供多種改版功能，方便、容易，可快速和打板模塊切換，樣板可以自動隨設計的修改而自動修改。

Marker System

- 全自動排料、人機交互排料和手動排料。
- Time limited auto nesting, auto and manual interactive nesting and manual nesting are available for different style.



轉換軟件:

- 導入DXF、AAMA格式文件
- 導入格博TMP和MOD格式文件
- 導入力克IBA格式文件
- 導入其他格式文件，例如WDS、DXF、AAMA、PLT
- Winda格式轉換軟件可以轉換很多其他國家的CAD系統文件。

File Format Converter

- Import DXF、AAMA format document exported from other CAD system.
- Import Gerber TMP or MOD format document.
- Import Lectra IBA format document.
- Import GBR format document.
- Import other kinds of format document export as WDS、DXF、AAMA、PLT format .
- Winda document exchange system can exchange files from many other CAD systems.



Super Nester System 超級排料系統

Winda super nester system combines lots of the latest optimization techniques in order to achieve the best results in a very short time. We use local search algorithms based on new variants of Simulated Annealing, multiply iterated greedy strategies, paired with efficient heuristics, pattern-recognition techniques, and fast sum calculators.

- One marker or multiple marker can be nesting in one time, no need any manual operation during nesting; multiple material marker can depart automatically and nesting fully automatically one by one.
- Can setup little rotate and overlap, same with manual control, to get better efficiency.
- One way or two way or each set in different way automatic nesting are available;
- The front and back piece can group and nest together automatic to avoid the fabric color different, or you can put complete set in the same place, you can choose every complete set put in up and down or left and right according to the fabric situation;
- Pattern fix nest, pyramid nest, automatic fault avoid nest, double marker auto nest, pattern nest in fixed area, all can be automatic finished.
- Compaction: After finish nesting, you can use this function, all pieces will try to move in front as more as possible to get better efficiency;
- Only one minute you can get the fabric costing, and the efficiency is good, proper price can make you potential customer become your real customer;
- The practice prove, after use the Winda super marker system, your working efficiency can improve 10 times and fabric saving up to 2%~4%.



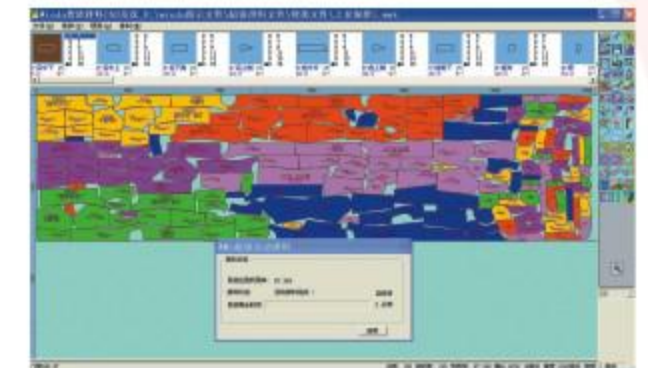
Auto nesting for 3 minutes 混排3分钟



Underwear nesting 內衣排料

WINDA超級排料系統集成了全球多名頂級的排料師的省料經驗，內置上千種最頂級的排料算法技術，借用于計算機的數據比對精確高速度快優勢，能短時間內對排料圖裁片進行成千上萬次組合調整以達到最佳狀態，從而最大限度節省布料。

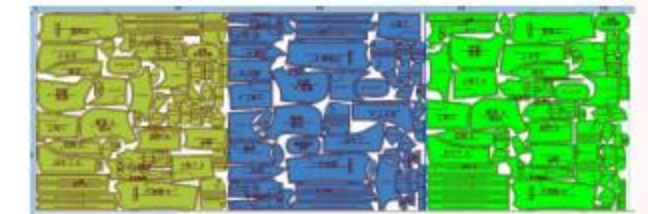
- 既可每次排一個嘜架，也可批量處理多布料的多個嘜架，還可自動處理多個款式文件的所有嘜架，所有的嘜架和文件會自動排好并安全保存。
- 嘜架可以設置一些紙樣輕微旋轉或者尖角重疊，更好的提高排料利用率。
- 自動處理雙向和單向布紋綫，無論正向紙樣，反向紙樣，還是每套方向不同，都可以自動排料。
- 可以把前片和後片固定在一起排放，有效地避免布料色差的影響，更好的提高產品質量！還可以把各套集中排放，可選擇左右或者上下排放，方便成套裁剪和避免色差！
- 固定樣片排料，高低層排料，避瑕疵排料，雙馬克自動排料，固定區域自動排料在WINDA的超排系統都是完全全自動實現；
- 擠壓功能：在人工或者超級排料系統排好的馬克，在原有位置不變的情況下，使用超級排料擠壓功能，系統能自動檢測和計算空白空間的大小，將後面樣片進行最大程度往前移動，更大提升面料使用率。
- 可以在1分內計算出接單最省報價，使潛在的客戶變為有效的接單，更好的提高您企業接單能力，提高企業市場競爭能力！
- 經過實踐證明，使用WINDA超級排料系統，工作效率提高近十倍，面料節省2%~4%。



Color shift nesting 避色差排料



Auto stripe nesting 自动对条对格



Auto pyramid nesting 高低层排料



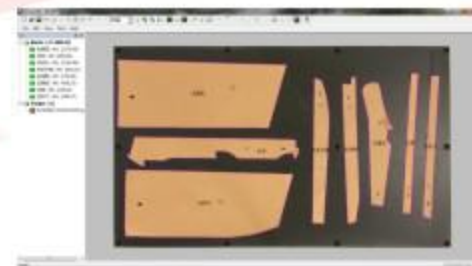
Camera Digitizing System 攝像輸入系統



camera and stand is options

Multiple patterns can be digitized in one shot and the software will automatically identify each pattern, internal lines, holes, notches and grain line, also the sewing line can be added easily just input the sew allowance. It is possible to modify patterns as required before pattern scanning.

This software can convert the digitized pieces directly to various CAD formats and standard AAMA DXF, in order to guarantee complete compatibility with other CAD system.



一次性可以拍攝多個紙樣，並且攝入的紙樣可以自動識別成單個樣片，內部綫，剪口，洞口和布紋綫等信息可通過快速拾取定義取得，可以自動添加縫份綫，還可以在輸出前根據需要隨意更改樣片。該系統可以直接將攝入的衣片轉換成普通的CAD樣板格式，以便和其他CAD系統兼容。

Digitizer
數化板

Hardware Interface 端口	RS-232 Serial Interface
Baud Rate 波特率	Up to 19,200
Output Rate 輸出速度	Up to 100pps
Technology 技術	Electromagnetic
Power Requirements 對電要求	200V-250V, 50HZ

Model 型號	Active Area(inch) 工作區域	Resolution 分辨率	Accuracy(mm) 精確度
WD-A4460C	44X60(A00)	2540LPI	0.20
WD-A3648C	48X36(A0)	2540LPI	0.20
WD-A3648S	48X36(A0)	2540LPI	0.127
WD-A2436C	36X24(A1)	2540LPI	0.20
WD-A2436S	36X24(A1)	2540LPI	0.127
WD-A1824C	24X18(A2)	2540LPI	0.25
WD-A3DTAB	24X18(A2)	2540LPI	0.25

High Speed Inkjet Plotter
高速噴墨繪圖儀

- Lowest operational cost and highest throughput
- More production: Plot more square/hour, print highly detailed or annotated markers with no degradation in speed.
- Good print quality, resolution from 600 d.p.i. Best mode to 300 d.p.i. Draft mode, line thickness settings to help manage ink costs.
- Overnight printing: Print on a variety of media;
- Works with a wide variety of CAD systems
- Lowest ink cost, Uses widely available HP ink cartridges;
- Operation is so easy, only one operator is required, the key-board design make rapid setting, rapid ink replacement
- Space-saving, Light-weight can easy to move the machine; Front-floor load minimizes space requirements.



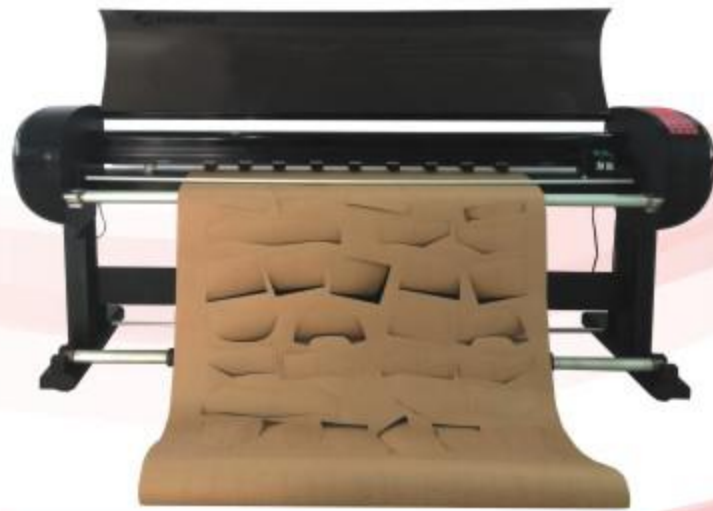
Four Head

Ink Tank墨水盒
(Options選項)Auto ink feeding device
自動灌墨系統(Options選項)

MODEL 產品規格:(Apolo/EC Series)	WD-JET 165H	WD-JET 185H	WD-JET 205H	WD-JET 225H
送紙寬度 Feeding width	185cm	195cm	215cm	235cm
打印寬度 Printing Width	165cm	185cm	205cm	225cm
打印速度 Printing Speed	135sqm/hour(2Head)		240sqm/hour(4Head)	
Ink head 打印頭	HP 熱印式 600DPI 噴嘴 HP thermal inkjet head(600dpi)			
Resolution 打印分辨率	300-600DPI Save-ink mode is Optional. 可選省墨模式			
Line quality 綫條質量	Precision, smoothly and no gap 精確, 圓滑, 無接縫;			
Max. Weight of Roll 最大紙卷重量	30KG			
Paper thickness 紙的厚度	25g-65g			
Orienting model 定位方式	Light Curtains 光柵定位			
Format 打印格式	HP/GL, DM/PL, DXF			
Feeding system 走紙系統	3000m accurate paper feeding by digital encoder system 3000米以上連續精確走紙, 數字編碼器感應系統			
Receiving system 收紙方式	Auto-receiving or without receiver 自動收紙或者免收紙, 方便大量短幅圖樣打印			
Interface 通信端口	USB 2.0 / NET port			
Operatal Keypad 控制鍵盤	Digital touchpad, easy and use long time 觸控數字鍵盤, 方便, 耐用			
Power 電源	交流電 220V/110V; 50Hz/60Hz			
Working environment 工作溫度和濕度	5-50°C; 0%-95%			
Security 安全標準	According to 根據 UI1950			

- 耗材最低, 產量最高
- 高產量: 繪圖速度更快, 繪制複雜綫條不需改變繪圖速度;
- 高繪圖質量, 繪圖分辨率可選從300到600, 可以設定綫條的厚度來省墨;
- 夜間連續繪圖; 可用于不同的繪圖紙張;
- 可兼容不同的CAD系統
- 最低的用墨成本, 選用普通常規的HP墨即可;
- 操作簡單, 只需一人可以操作, 按鍵板設計保證操作靈活和便捷; 換墨快速;
- 節省空間, 輕型設計使機器容易移動, 前收紙方式可以大大節省空間。





Stand Inkjet Cutting Plotter

立式噴墨切割繪圖儀



High Speed Apparels Pattern Cutting Machine

高速服裝平板切割機



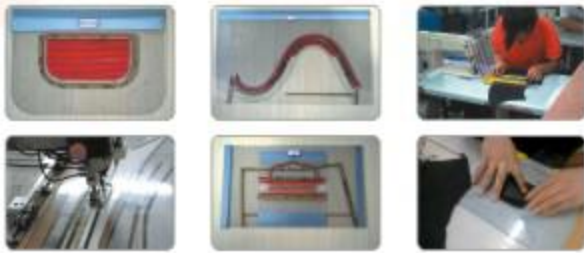
型號/Model	WD-SPC165	WD-SPC185	WD-SPC205
送紙寬度Max.Width Of Paper	175CM	195CM	215CM
打印切割寬度 Max.Plotting & Cutting Width	165CM	185CM	205CM
分辨率Resolution	矢量: Vector/0.0125 點陣: Raster/600 DPI		
標準系統Configuration	閃電引擎系統, 獨立驅動, 進口電機 'Lighthning Engine'Syetem,Independent Driver,Imported Motor		
打印速度Plotting Speed	矢量Vector:1200mm/Sec ;點陣Rester:40-120Sqm/Hr		
切割速度Cutting Speed	1200mm/Sec		
切割厚度Max.Cut thickness	0.3mm-1mm (300g)		
線條質量Print Quality	精確, 圓滑, 無縫隙 Works Precisely,Shoothly,And No gap Between two contiguous Sections		
軟件兼容Compatibility	HPGL (特殊格式可定制) (Special Format Can Be Back-Ordered)		
裝紙Paper Installtion Mode	前/後置式 (可選) 收放紙系統 Front Or Back Paper-Supply System Is Optional		
走紙系統 Paper Feeding System	1200米以上精確連續走紙, 隱形數字編碼感應系統 1200MAccurate Tracking System And Inside Digital Sentem Insure Marker Paper Is Feed Continually And Straightly More Than 1200m Long		
超級功能 Super Functions	1.實時精確調速度, 調壓力。 2.無墨水停機提示。 3.倒繪倒切功能。 4. 全程電子閉環位置記憶。 5.差分數據通道, 實時糾錯, 實時雙向控制。 6. 高精密分對接定位技術。 1.Real-time Adjust Speed And Force Accurately 2.No-ink Prompt. 3.The Capability of Reverse Is Only One In The Worldm. 4.Memorize Positon Of Present Plotting Automatically In Whole-procedure With Closed-loop System. 5.Asynchronous Transfer Mode(ATM),Real-time Error Corrcction,Real-time And Bi-Directional Operation. 6.Advanced Differntial Graphic Docking And Positioning Technology.		
主機結構 Machine structure	美式, 一體化, 全金屬, 高剛性, 耐磨結構, 確保機械壽命比普通產品高5倍。 American style, integration, all metal, high rigid, wear resistant structure, ensure mechanical life moves five times higher than similar products		
智能筆車 Intelligent Cartridge	自動原點記憶, 電子彈簧自動適應紙張, 下刀精準, 線條清晰。 Memorize Original Point Automatically,Electronic Soring Fit Paper Automatically, Pen-Down Accurately And Plot Clearly		
智能保護 Intelligent Safeguards	獨立數據通道0幹擾, 超寬報警, 無墨水報警, 過載報警, 障礙報警 Over-width And Over-length Alarm,No-ink Alarm,Over-load Alarm And Obstacle Alarm		
電源供應Power Availability	90/264V, 47/66Hz		
通訊端口PC Interface	RS-232, USB2.0		
控制按鍵Operation Keypad	Digital Keypay Is Front Of machine.Real-time Oprating Is Easy And Accurate 操作面板在機器前方, 容易和準確操作		

型號/Model	WD-FJ1512	WD-FJ1509	WD-FJ1209
分辨率Resolution	矢量: 0.0125 點陣/600DPI Vector: 0.0125 Raster: 600 DPI		
繪圖速度Plotting Speed	矢量Vector:1200mm/Sec ; 點陣 Rester:40-120Sqm/Hr		
切割速度Cutting Speed	1300mm/Sec		
切割厚度Thickness Of Media	0.5mm -2mm		
線條質量Line Quality	精確, 圓滑, 無縫隙Works Precisely,Shoothly,And No gap Between two contiguous Sections		
軟件兼容 Compatibility	HPGL特殊格式可定制 HPGL(Special Format Can Be Back-Ordered)		
裝紙Paper Installtion Mode	前/後置式 (可選) 收放紙系統 Front Pr Back Paper-Supply System Is Optional		
超級功能 Super Functions	1.實時精確調速, 調壓力。 2.無墨水停機提示。 3.倒繪倒切功能。 4. 全程電子閉環位置記憶。 5.差分數據通道, 實時糾錯, 實時雙向控制。 6. 高精密分對接定位技術。 1.Real-time Adjust Speed And Force Accurately 2.No-ink Prompt. 3.The Capability of Reverse Is Only One In The Worldm. 4.Memorize Positon Of Present Plotting Automatically In Whole-procedure With Closed-loop System. 5.Asynchronous Transfer Mode(ATM),Real-time Error Corrcction,Real-time And Bi-Directional Operation. 6.Advanced Differntial Graphic Docking And Positioning Technology.		
主機結構 Machine structure	輕質航空金屬平臺, 靜音高負壓吸風系統, 原裝進口直線導軌 Light Air-metal Platfirm,Mute High-vacuum Suction,Originally Imported Slide-rail		
智能筆車 Intelligent Cartridge	原點自動記憶, 電子彈簧自動適應紙張, 下刀精準, 線條清晰 Memorize Original Point Automatically,Electronic Soring Fit Paper Automatically, Pen-Down Accurately And Plot Clearly		
智能保護 Intelligent Safeguards	超寬報警, 超長報警, 無墨水報警, 過載報警, 障礙報警 Over-width And Over-length Alarm,No-ink Alarm,Over-load Alarm And Obstacle Alarm		
紙張要求 Paper Availability	繪圖: 45克-450克;切割: 45克-450克 (450克以上可定制) Plotting:45g-450g;Cutting:45g-450(The Custom-order of 450g And Up option Is Available)		
電源供應Power Availability	90/264V,47/66Hz		
送紙區域 Max.Paper Feeding Area	120cmX150cm	90cmX150cm	90cmX120cm
繪圖切割區域 Max.Cutting And plotting Area	120cmX150cm	90cmX150cm	90cmX120cm
通訊端口PC Interface	RS-232,USB2.0		
控制按鍵Operation Keypad	數字按鍵, 無線遙控, 簡單精確 Digital Keypay Is Front Of machine.Real-time Oprating Is Easy And Accurate		



Template Cutter 模板切割機

Options :
Cooling System



型號/Model	WD-TC1512	WD-TC1509	WD-TC1209
幅寬Cutting area	1200mmX1500mm	1500mmX900mm	1200mmX900mm
主體功能Main function	鑽，銑，切，繪；Drilling, milling, cutting, plotting		
作業對象Material	非金屬板材和紙張的數控銑切繪圖 Cutting and Drawing of non-metallic sheet and Card board		
電機類型Motor Series	步進電機Step Motor		伺服電機Servo Motor
繪圖/切割速度Plot & Cutting Speed	300mm/s		1200mm/s
銑削速度Milling Speed	50mm/s		800mm/s
電源供應Voltage	220V		
選配附件Options	負壓氣泵 air pump; 1500W; 筒式吸塵器 Barrel type vacuum cleaner; 1200W		
銑切厚度 Material Thick	6mm		
紙張厚度 Paper Thick	60-1000g		
主機功率 power	350W		
通訊接口 Interface	USB2.0		

Laser Cutting And Engraving Machine

激光切割雕刻機



Garments, shoes, bags and luggage, computerized embroidery and clipping, template cutting, toys, furniture, advertisement decoration, handicraft, packaging, printing and so on.

服裝業，鞋業，箱包，電腦繡花裁剪，模型，電子電器，玩具，家具，廣告裝飾，工藝品，包裝和印刷等行業。

組成：

- 驅動形式：三相步進電機；
- 計算機的採用：液晶LCD屏幕、DSP智能控制系統；可以直接從USB端口輸出圖片，也可以不用電腦進行工作；
- 激光管類型：60W/80W CO2密封玻璃管；
- 平臺：金屬蜂窩狀工作平臺；
- 導軌：韓國原裝進口六均衡導軌和集成框架結構；
- 鏡頭：新加坡原裝進口激光鏡片；
- 傳輸帶：意大利原裝進口傳輸帶；
- 冷卻系統：工業循環用水冷卻器。

Feature:

- The outside sliding guide ensures fast processing speed, which is especially suitable for the garment and leather industries.
- Being integrated with more concise frame, this machine is more economical but still have the same excellent cutting and engraving effects.
- Our three unique protection functions, i.e. antinterference function, water-protective function and power cut-off function ensure longer working life, stability and effectiveness.
- The stainless steel honeycomb platform we adopt, which is breakage-proof, ensures stable focus distance thus good cutting and engraving quality.



- Original Singapore imported lens with molybdenum base makes the equipment produce smaller facula and stronger cutting force, greatly improving working efficiency and reducing cost.
- Exhausting, absorbing and assistant blowing systems solve the problem that troubles the laser equipments manufacturing industry for years, extending the life of the laser tube.
- This machine uses USB port to transmit data, equipped with large-capacity internal memory, improving working speed and efficiency greatly.

Model 機器型號	WD-T0906	WD-T1080	WD-T1280	WD-T1610
Processing Area 加工面積	900X600mm	1000X800mm	1200X800mm	1600X1000mm
Max. cutting speed 最大切割速度	24000mm/min			
Max. engraving speed 最大雕刻速度	40000mm/min			
Laser power 激光功率	60W/80W/100W/135W			
Resolution ratio 分辨率	0.0064mm			
Min. shaping character 最小成形文字	Chinese character: 2X2mm Letter: 1X1mm			
Location precision 定位精度	<0.01mm			
Power supply 電源	AC220V ± 10%, 50Hz			
Gross power 總功率	1250W			



Laser Marking Machine 激光打標機



技术参数 TECHNICAL PARAMETERS

機器型號 MODEL	加工面積(毫米) Processing Area (mm)	整機功率 Gross power	機器尺寸 (毫米)(長x寬x高) Measurement (mm)(LxWxH)	系統/兼容格式 System/compatible Format	重量(千克) Weight(kg)	電源 Power Supply	環境要求 Environmental requirements
WD-XXP5-600-2D	1200x1200	≈12000W	3060x1830x2100	Windows XP/7 AI, PLT, DXF, DST, BMP, JPG, JPEG, PNA,	淨重 NW:700	380V,50Hz /60Hz40A	溫度 10-30℃ 濕度(無結露) 30-80%
WD-XXP4-320	1000 × 1000	≈4500W	1600x950x1700		淨重 NW: 485	220V50Hz /60Hz,20A	Temperature 10-30℃ Humidity
WD-XXP3-180	300 × 300 400x400 500x500 600x600	≈3500W	941x752x1500		淨重 NW: 180	220V 20A 50 /60HZ	(no condensation) 30-80%



WD-FC SERIES FULL SCREEN CAMERA LASER CUTTER

• Working area 1600×1000mm with 18 million pixels and the system is Japanese Camera System

This series is equipped with camera which is for cutting labels and trademarks in certain designs.

- This model will be supplied with a computer.
- It adopts CCD camera with 3,200,000 pels and super-recognition software, ensuring the accuracy of cutting trademarks with whole area, without remaining anyone.
- In the combinative work of pick up positioning visual system and computer software, this model can carry out overall and automatic trace compensation to the fine stretch and distortion of cloth.

Panoramic High And Low Camera Laser Cutting Machine

- Trademark weaving, clothing lace, cloth toys, computer embroidery.
- Two cameras simultaneously control , while meeting the customer's accuracy different requirements for precision, precision and high efficiency of the perfect combination.

Get WD-B Series Laser Bed in your exact specifications.

- Adopting the most advanced 64 bit high speed DSP to build the Smart Carver controller, we have largely improved the performance of this model.
- The light is suited to speed automatically, so it can ensure the cutting quality in corners. The function of continuous carve cutting can make the max cutting speed reach 24m/min, realizing high cutting speed of accouterments, improving the productivity and competitive ability of garment enterprise greatly.

Applications:



WD-C Series Pickup Positioning Labels Cutter



WD-B Series Laser Bed



數控模板縫紉機 CNC Template Sewing Machine

Feature: (DS Series)

產品特點: (DS 系列)

- High precision ball bearing screw rob , straight slide way , Servo motor, two symmetry axis.
- Low noise , Super high sewing precision and stable , long life & high intelligence.
- 采用進口精密滾珠絲杆, 直線導軌, 進口伺服電機, 雙邊絲杆結構。
- 低噪音, 超高縫制精度, 高壽命, 超高穩定性, 高智能。



OPTION: KNIFE CUTTING



OPTION: LASER CUTTING

Feature:(S Series)

產品特點: (S 系列)

- X/Y axis both are screw rod with servo motor . Max sewing speed 3000RPM .
- S系列模板機機采用進口絲杆導軌與進口伺服電機, 最高縫制速度為3000轉每分鐘。



Series 系列	DS Series		S Series	
Model 型号	WD-DS-13090	WD-DS-13070	WD-DT-13090	WD-DT-13070
Structure 机型结构	高精密控制 High Precious Screw Rob		轴丝杆传动Screw Rob	
Max .Sewing Speed 最大縫制速度	3500RPM		3000RPM	
Max .Sewing Area 最大縫制面积	1300 x 900mm	1300 x 700mm	1300 x 900mm	1300 x 700mm
Rotary Hook Spe 旋梭规格	(大) 小旋梭 (Large) Small Hook			
Needle Pitch 针距	0.05-12.7mm			
Max. Stitches for each pattern 每个縫制图案最大针数	4万 40000 stitched			
Needle Model 机针型号	DB x 7#-23#			
Work Clamp Height 压脚高度	最大Max.30mm			
Template Change Style 模板切换方式	条形码智能切换Intelligent Change By Bar Code			
Motor 马达类型	交流伺服AC servo motor			
Power 电源规格	交流 单相 AC Single Phase 220V/3A			
Main Capacity 总功率	700W		600W	
Pneumatic Spec 气动规格	0.5-0.8 Mpa 1.7L/min			



產品其他輔助功能: Other assit function:



可360° 縫制
Can 360° Sewing

自動點位筆 Automatic Point Pen 輔助壓腳裝置 Auxiliary Press Foot 高精度XY 軸運動絲杆導軌 High Precision XY shaft screw rod lead rail

產品綜合應用: Machine applying





Automatic Spreading Machine

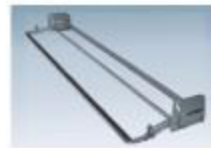
全自動拉布機

bullmer

FOR KNIT & WOVEN
針/梭織專用拉布機



OPTION



OPTION



OPTION

FOR WOVEN FABRIC
梭織專用拉布機

机型Model	KW2000S			W1800E	
电压Power Supply	1P/220V				
拉布宽度 Maximum Cloth Width	1900mm/75"	2100mm/83"	2200mm/87"	1600mm/63"	1900mm/75"
裁台宽度Table Width	2130mm/84"	2330mm/92"	2430mm/96"	1830mm/72"	2130mm/84"
布料重量Weight of cloth roll	60kgs max			200kgs max	
布料直径Diameter of cloth roll	600mm max				
行走速度Travel Speed	94m/min max				
机器尺寸 LxWxH Dimensions(mm)	2630x1900x1000	2830x1900x1000	2930x1900x1000	2300x1450x800	2600x1450x800
装箱尺寸 LxWxH Packing Volume(mm)	2800x2000x1250	3000x2000x1250		2500x1550x1100	2800x1550x1100
净重/毛重 N.W./G.W	585/875KG	625/985KG	645/1065KG	475/705KG	525/785KG
拉布高度Lay Height	单拉One way: 220mm 双拉 Zigzag: 150mm			单拉One way: 200mm 双拉 Zigzag: 150mm	
拉布方式 SPREANING METHODS	单向拉布 ONE-WAY SPREADING (FACE UP) 		双向拉布 ZIGZAG SPREADING (FACE TO FACE) 	多段式长短拉布 MULTIPLE LENGTH SPREADING(FACE UP) 	



特點Features:

針梭兩用伺服鋪布機採用PLC控制系統，適用於針織和梭織面料的高精度無張力鋪布，多道展布裝置保證鋪布平整。鬆緊度調節採用伺服控制，能夠精準調節鋪布鬆緊度，具有鬆緊度參數記憶功能。切刀架自動上升和下降功能，能夠保證切刀架與面料在一個固定的高度；具有自動斷布及自動磨刀等功能，能夠實現單拉、雙拉鋪布。

The kw2000s automatic spreader adopts PLC control system, and is applicable to high-precision and tension-free spreading of knitted and woven fabric, multi spreading devices guarantees the smooth spreading. Tightness adjusting adopts servo control, people can precisely adjust the tightness of spreading cloth with tightness parameter memory function. Besides, blade holder can automatically rise and fall, which can make sure that the cut holder and fabric are in a fixed height. other functions are automatic cloth cutting and auto sharpening. Several spreading way can be achieved: one way spreading, zigzag spreading, etc.

梭織專用型鋪布機適用於梭織面料的高精度無張力鋪布，多道展布裝置能夠保證鋪布平整。採用PLC控制系統，針對不同的面料特點，可以設置不同的參數，如速度、刀架升高高度、切刀行走速度及行走距離等。能夠實現單拉、雙拉鋪布。

Woven fabric specialized automatic spreading machine uses PLC control system, applicable to high-precision and tension-free spreading, and multi spreading devices guarantees the smooth spreading. For various fabric characteristics, different parameters can be set, including speed, elevated height of blade holder, walking speed and walking distance of the blade, etc. Several spreading way can be achieved: one way spreading, zigzag spreading, etc.



上布架
Auto Loader TL-200-19/22



圓筒布裝置
Tubular Device

自動貼標籤機 Automatic Labeler LM2100

自動貼標籤機是一種裁前自動化設備，它的功能是通过工業打印機打印熱敏標籤，在鋪好的面料上貼上相關版圖的裁片信息。標籤耗材為熱敏打印紙，無需油墨，價格低廉，易于購買，更換方便。

The automatic labeling machine is pre-cutting automatic equipment which equipped with industrial printer by thermal printing and paste relevant layout information on the paved fabric. The label consumable is thermal printing paper, no ink, low price, easy to get and replace.





Automatic Bitting(Cutting) Machine 全自動定長切斷機



工作中
In working

特點:

- 定長切斷
- 自動計數裝置
- 可實現單人輕鬆操作
- 微電腦PLC綜合控制系統
- 以人機對話方式進行操控

Feature

- Auto Fabric Cutter
- Auto Mated counting device
- One person can control it easily and simply
- Microcomputer integrated control system
- To operate through the man-machine interaction

机型Model	WD-F1-210
斷布寬度 Cutting Width	2100mm
最大驅動速度 Drive Speed (Max)	106m/min
電源功率 Power Supply	1P 220V/50Hz 1KW
裁板寬度 Table Width	2330mm
機器尺寸(長×寬×高) Machine Measurement (L×W×H)	2800×1650×950mm



Sample Cutter/Continuous Single-ply Auto Cutter 連續性單層裁床



Optional



projector software and frame
(projector not included)對稿對象系統



Feeding Frame 送料架



Receiving Platform 收料台

型號/Model	WD-SC1616	WD-SC1618	WD-SC1620	WD-SC2516	WD-SC2518	WD-SC2520
有效工作區域 Working Area	1600×1600	1600×1800	1600×2000	2500×1600	2500×1800	2500×2000
矢量速度 Vector Speed	1200mm/s					
標記/沖孔 Signal(punching)	6 piece /s					
道具行程 Tool Producer	50mm(特殊行程可定制 Special Producer can be back-ordered)					
重複精度 Repetition Accuracy	≤0.1MM					
噴墨分辨率 Plot Resolution	600dpi					
噴墨速度 Plot Speed	95 sqm/hour					
輸出格式 Output Format	HP-GL					
操作界面 Working surface	Windows , 以太网/ Wifi, 硬盘容量Hard drive capacity					
數據傳輸 Data transmission	交流伺服/ 高精行星減速機/ 直接導軌/ 絲杆/ 同步帶 Ac servo/high precision planetary reducer/guide/screw rod /synchronous belt					
緩沖區容量 Buffer Size						
驅動模組 Drive Mod						
固定方式 The fixed way	負壓吸附negative pressure adhering					
主機電壓/頻率 主機功率/ 工作環境 Voltage/power/ environment	Ac220,50-60Hz/1500W/10-45℃					
作業對象 Cutting Material	柔性材料定制: 裁剪; 切割; 繪圖; 標記 For the soft fabric custom-made: tailoring, cutting, plotting, signing					



bullmer

High Speed Auto Cutter 高速自動裁床



應用範圍 Application
 服裝、家私、玩具、箱包、汽車椅等
 Apparel, upholstery, toys, luggage, automotive etc.

產品簡介 product introduction
 這款高層裁床設計裁割80毫米，因此是專為重型和高強度工作而設計。她在性能，產能，精確度和可靠性方面均代表了國際最高水平。但是，它却仍然保持着較低的使用及維護成本，是軟制品行業最理想的選擇。
 The high ply cutter is designed for cutting heights of 80mm at high speed.It was therefore designed to be particularly robust and heavy duty.It represents the highest level in the world for the performance.Productivity,accuracy,reliability.Nevertheless,it still offers low maintenance and cost-effective operation.It is perfect choice for the garment industry.

自动裁床与传统生产模式对比 Compared with traditional mode

提升企业形象

Enhance corporate image

改善生产环境、降低工作强度

Improve production environment, reduce working intensity.

改善传统的生产管理模式

Improve traditional PMS

提高生产效率

Improve productivity

降低材料成本

Cost reduced

提升产品质量

Quality enhanced



軟件優勢 Software advantages

- 根據裁片輪廓自動調整裁剪速度
Automatic cutting speed-optimization depend on the bow of the pattern contour
- 根據裁剪速度變化自動調整刀頻
Automatic reduction of knife frequency in relation to the cutting speed.
- 裁片臨近處自動減速
Automatic reduction of cutting speed of parts with low parts distance to improve cutting quality.
- 裁片內外角度自動識別
Automatic identification of outside and inside corners of cut part contour
- 廢料自動裁斷
Transverse cut of scrap



獨有優勢 Unique advantages

裁頭優勢 cutting head advantages
 裁頭馬達最高轉速7200轉/分，最大裁割速度可達100m/min，加速度可達1.0g
 Maximum speed of cutting head motor can be 7200rpm,maximum speed can be 100m/min with 1.0g maximum acceleration

刀盤優勢 knife plate advantages
 裁頭採用兩個刀盤：大刀和小刀盤，在裁割過程中小刀盤不接觸面料，避免裁割過程中樣片錯位，大大提高裁割質量。
 As the application of two knife plates:big and small plate,the small one does no touch materials when it works.therefore,cutting quality is increased by avoiding pattern misplacement



獨特的刀軌、刀智能系統 Special knife guide and knife intelligence system
 獨特的裁刀，固刀部件設計，提高對面料的適應性，提高了裁割高度，刀驅動加裝傳感器，通過壓力感應自動糾正刀片角度，確保裁割精度。
 With the special design for knife holding parts, the flexibility for the material is improved.as well as the cutting high,knife drive with sensor will correct the angle of knife blade through pressure response,thus the cutting will be ensured.



自動加油 Automatic lubrication system
 免日常維護的裁頭自動加油系統，可根據要求（刀類），由電腦控制自動加油，使油量保持在最佳狀態，大大提高產品壽命，免去用戶每天加油所帶來的不必要麻煩及遺忘加油，同時提高裁床的壽命及使用率。
 Controlled by computer,automatic lubrication system is another advantage of our cutting head.And in this way,daily refueling for the machine could be canceled,in the life time of the machine is extended in well service condition.



獨特的裁頭結構 Unique cutting head structure
 裁頭採用整體合金鑄成結構，不會因為長時間使用發生鬆動磨損而影響裁割精度及使用壽命。
 Aluminum cutter head which made in mould is high accuracy long life time.

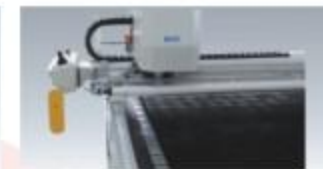
床體優勢 cutter base advantages

導軌 Guide rail
 托卡奔馬裁床X.Y軸導軌採用封閉式綫模。終身免維護。
 X.Y axis with linear module,maintenance free.

質量優勢 Quality advantages
 床體採用永不生鏽的航空鋁型材，材料屬性穩定，大大延長使用壽命。
 Aluminum cutter base is stable with long file time.

清潔裝置 Cleaning device
 過窗時，裁床自動清理鬃毛磚裏面的碎屑，其他品牌清理一次鬃毛磚則至少需要一天時間。
 When bite feed,the machine cleans the bristles automatically.while.cutters of other companies should need one day for bristles cleaning.

真空優勢 vacuum advantages
 高效低噪音的真空發生器，採用渦輪增壓的技術，標準真空泵功率為15kw，在此基礎上再採用變頻控制技術，其能耗僅為同行產品1/3，節能且噪音低。
 High efficiency, low power consumption vacuum with inverter control standard power only 15kw.



電控優勢 Control box advantages

電控箱採用封閉式空調恒溫技術，在同類產品電控故障頻發的情況下，我們電控故障率幾乎為零。
 Compared with other companies,the fault rate of electrical-control box is lower,because of closed and thermostatic technology.



其他優勢 Other advantages

使用成本優勢 Cost advantages
 所有零部件都採用國際公制單位，並且百分之八十的零部件為標準件。市場價格透明
 All parts are international metric units 80% of them are standard parts,can be easily in the market.

德國進口刀片、鬃毛磚質量好、壽命長，耗材使用成本大大降低。
 High quality and long life time for Germany blade and bristle.the cost can be reduced sa half or other brands.

由於產品質量穩定，故障率低，在提高裁床使用率的同時大大降低了服務費。其年維修費用為其他品牌的一般
 Stable quality and low failure rate increased the utilization rate of cutter but reduce service and maintenance cost.



鋪布和切割臺板 Spreading/Cutting Table

标准型台板 Standard Type Spreading /Cutting Table

Special plastic laminate finished
表面超級美耐板
长度Length :120cm ,
宽度Width : 183cm ,213cm , 243cm and special made .
高度 Height : 80-85 cm can be adjustable



气浮/吸气台板 Air Float/Sucking Type Spreading /Cutting Table

Special plastic laminate finished
表面超級美耐板
长度Length :120cm ,
宽度Width : 183cm ,213cm , 243cm and special made .
高度 Height : 80-85 cm can be adjustable
带气孔With the air hole 带风机 With air blowing motor



电轨系统 Power Rail



传输带台板 Auto Conveyor Table



手動切斷機 Manual end cutter



WD-ST-206A

半自动切斷機 Semi-Auto End Cutter



WD-ST-205B

全自動切斷機 Automatic end cutter



WD-ST-205A



直立裁切刀Straight Knife Cutter

	8629		
SIZE	5"	8"	10"
VOLTAGE	110/220V, 50/60HZ, 1HP		
CUTTING CAPACITY	3.75"	6.5"	8.5"
HORSE POWER	600W/0.8H	750W/1HP	750W/1HP
WEIGHT	10KG	15KG	15.5KG



面料打孔机 Fabric Drilling Machine

LIGHT WEIGHT 輕便 EASY HANDLING 易操作 POWERFUL 功能强大

圓刀裁切刀 Round Knife Cutter



	RK-35	RK-45
VOLTAGE	220V/50HZ/1P	220V/50HZ/1P
HORSEPOWER	0.2HP	0.24HP
MOTOR SPEED	700R.P.M	560R.P.M
BLADE SIZE	8.89CM	11.4CM
LOWERBLADE	STANDARD	STANDARD
SHARPEDER(STONE)	STANDARD	STANDARD
CUTTING CAPACITY	22MM	32MM
MACHINE WEIGHT	2.6KG	3.7KG
GROSS WEIGHT	3KG	4.4KG



WD-FDM120

運刀裁切機 Bandknife Cutting Machine



Standard Equipments

- Variable Speed with inverter Motor
- Ball Nozzle Airflo Work Table
- Automatic Sharpening Device
- Knife cooling Silicon Pad
- Knife Speed Digital Display

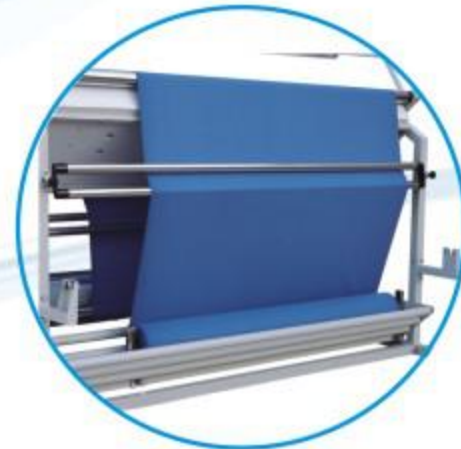
标准装置

- 变换马达可调教速度
- 珠型喷嘴汽垫工作台
- 自动磨刀装置
- 刀片冷却硅块
- 刀速数字显示

SPECIFICATIONS规格:	EC-700N	EC-900N
CUTTING CAPACITY 切割能力	180mm	180mm
TABLE SIZE 工作台面积	1500X1800mm	1500X2100mm
TABLE HEIGHT 工作台高	720-790mm	720-790mm
ARM SIZE 臂长	700mm	900mm
SPEED CONTROL 速度控制	VARIABLE 570/min-1140/min	VARIABLE 570/min-1140/min
MACHINE WEIGHT 机器重量	280kgs	300kgs
KNIFE SIZE 刀长	0.45X10X3500mm	0.45X10X3960mm
MOTOR 马达	220V 750W	220V 750W
BLOWER MOTOR 吹风马达	220V 180W	220V 180W
DIMENSIONS(mm) 长X宽X高	1640(L)X940(W)X1980(H)	1640(L)X940(W)X1980(H)



驗布機 Fabric Inspection Machine



(後視圖) Rear elevation



WD-124普通單卷驗布機
Woven Fabric Inspection Machine

WD-124-ED(選項 OPTIONS)
(帶自動對邊功能 with Auto Edge Control Function)

功能：驗布、量布、卷布。

Fabric inspection, fabric measurement, fabric rolling.

適用於：中、薄梭織布料。

Best for: woven fabric

耗電量：WATT 約 0.8-1.5KW

機身尺寸：SIZE: 60"195X119X 172(cm)
72"225X119X 172(cm)
84"255X119X 172(cm)
94"280X119X 172(cm)



WD-124G 重型、厚料梭織布驗布機
Heavy Woven Fabric Inspection Machine

WD-124G-ED(選項 OPTIONS)
(帶自動對邊功能 with Auto Edge Control Function)

功能：驗布、量布、卷布。

Fabric inspection, fabric measurement, fabric rolling.

適用於：厚、薄梭織布、重型布匹等。

Best for: thick woven, thin woven or heavy fabric.

耗電量：WATT 約0.9-1.5kw

機身尺寸：SIZE: 60"194X100X 174(cm)
72"224X100X 174(cm)
84"255X100X 174(cm)
94"280X100X 174(cm)



(後視圖) Rear elevation

自動對邊鬆(疊)布、驗布機 Knit Fabric Inspection And Relax Machine



功能：驗布、量布、鬆(疊)布齊邊

Features: fabric inspection, fabric measurement, fabric loosening (folding) and edge alignment

適用於：針織、梭織、彈性布(通用面料)

Best for: knit fabric woven, spandex(general fabric)

機身尺寸：

SIZE: 72" 243X180X200(cm)
84" 273X180X200(cm)
94" 298X180X200(cm)

耗電量：
WATT: 1.6-1.85kw



疊布寬度
FOLD CLOTH WIDTH
58-55(cm)

WD-124LF-ED

內衣高彈面料驗布機

Elastic Fabric Inspection Machine

內衣高彈面料首選機型 The first choice for underwear high elastic fabric.

功能：驗布、量布、卷布或鬆布。

Features: Fabric Inspection, Measurement, Rolling And Loosening

適用於：針織、梭織布、輕薄高彈性針織面料。

Best for: Knit, woven fabric, lightweight and high-elastic knit fabric.

最大卷布直徑：Φ45cm

Maximum fabric rolling diameter: Φ45cm

耗電量：約1.5-2KW Watt: 1.5-2kw

電壓：220v、50hz Voltage: 220v, 50hz

有效幅寬Valid fabric width:

72" (180cm)
84" (210cm)
94" (235cm)
120" (300cm)

機身尺寸：

Size: 255 x 155 x 187(cm)
285 x 155 x 187(cm)
310 x 155 x 187(cm)
376 x 155 x 187(cm)



WD-123SRK-ED-LF



多功能驗布機 (標準配置Standard configuration)

多功能針梭兩用驗布機

Multi-functional Inspection Machine



有效幅寬: Valid Fabric width:
72" (180cm)
84" (210cm)
94" (235cm)
120" (300cm)

機身尺寸: Machine size:
255 x 150 x 187cm
285 x 150 x 187cm
310 x 150 x 187cm
376 x 150 x 187cm

WD-213G-ED

電壓: 220V、50Hz
Voltage: 220V、50Hz
耗電量: 約1.3-1.6KW
WATT: About 1.3-1.6KW

功能:驗布、量布、卷布齊邊、電腦張力控制、靜電消除。
Function: Fabric Inspection, Fabric measurement, Fabric Rolling and Edge Alignment, Computer-controlled Tension, Static elimination.

適用於: 羽絨服面料、雨傘面料、厚、薄梭織面料及皮革料等
Best for: Down cloth fabric, Umbrella fabric, thick and thin woven fabric or Leather.

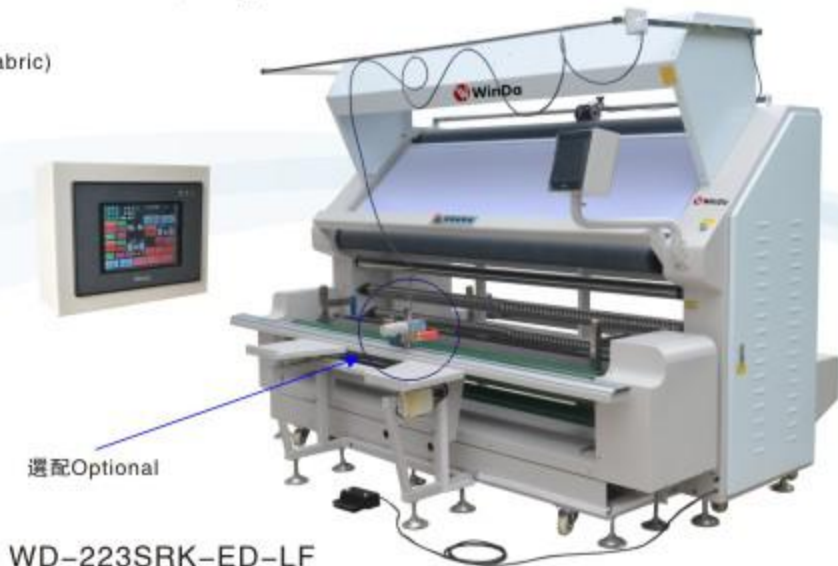
最大布卷直徑: Φ45cm
Maximum Fabric Rolling Diameter: Φ45cm

電腦控制多功能驗布機

Computer-Controlled Multi-Functional Fabric Inspection Machine

功能: 驗布、量布、松布、称重、卷布齊邊、展布邊、電腦張力控制、斷布、靜電消除 (選裝)
Functions: Fabric Inspection, Length Measurement, Fabric Loosening, Weighing, Fabric Rolling Edge Alignment, Spreading Fabric Edge, Computer Control Tension, Cutting, Static Elimination (Optional)

適用於: 針織、梭織、彈性布 (通用布料)
Best For: Knit Fabric, Woven, Spandex (General Fabric)
最大卷布直徑: Φ45cm
Maximum Fabric Rolling Diameter: Φ45cm



WD-223SRK-ED-LF

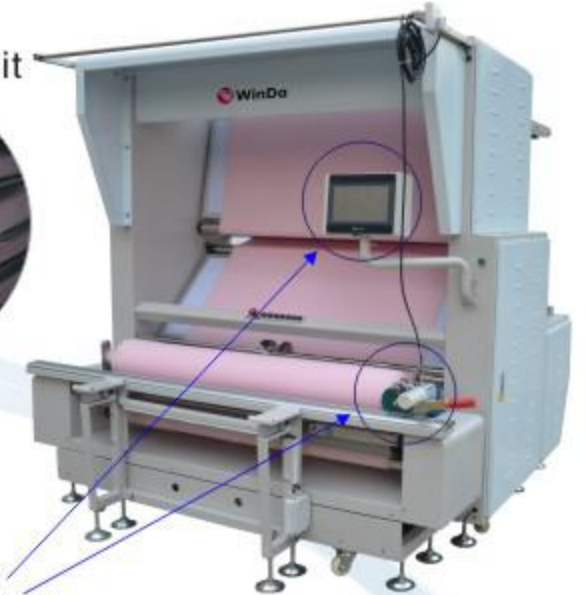
選配Optional



電腦控制針織圓筒布雙面驗布機

Computer Controlled Two-sides Tubular Knit Fabric Inspection Machine

功能: 驗布、量布、稱重、卷布齊邊、展布邊
Function: Fabric inspection, Length measurement, Weighing, fabric rolling and edge alignment, Spreading fabric edge
適用於: 針織圓筒布、針織、彈性布、梭織布等。
Best for: tubular knit fabric, knit, spandex, thick woven, woven fabric



選配Optional

WD-887SRK-ED-2S

特點:

可根據面料扣分制對面料疵點項目, 疵點位置, 疵點原因, 扣分數, 面料重量, 面料長度, 面料供應商等資料實時采集并打印, 數據儲存并可聯機共享查閱, 實時智能化大數據管理。

FEATURES:

The defect types, defect location, defect quantity, defect scores, fabric weight, Fabric length and suppliers etc. Information of the inspected fabric could be recorded, saved to the computer and shared through online computer, and printed out at any time during inspection, so as to achieve big data intelligent management.

可一次性檢驗面料的正、反兩個面
Can inspect the front and the reverse side of the fabric at one time.

1. 可加裝自動檢測面料門幅寬度裝置 (DW) (需另行訂購)
Adding auto detect fabric width function (optional)
2. 可加裝機器視覺自動驗布系統 (SI) (需另行訂購)
Adding automatic self fabric inspection system (optional)

耗電量Watt:	約1.5-2.0KW
有效寬幅Valid fabric width:	機身尺寸Machine Size
60" (150cm)	205*205*202cm
72" (180cm)	235*205*202cm
84" (210cm)	266*205*202cm
94" (235cm)	291*205*202cm
120" (300cm)	357*205*202cm

針織坯布驗布機

Grey Fabric Inspection Machine

功能: 驗布、量布、松布、卷布齊邊、展布邊、張力調校
Features: Fabric Inspection, Fabric Measurement, Fabric Loosening, Fabric Rolling And Edge Alignment, Tension Adjustment

適用於: 針織、梭織、彈性布 (通用布料)
Best For: Knit Fabric, Woven, Spandex (General Fabric)
最大卷布直徑: Φ45cm
Maximum Fabric Rolling Diameter: Φ45cm



(後視圖) Rear elevation



WD-887G-ED-H



全自動智能驗布機

Intelligent **Fully Auto** Inspection Machine

型號: WD-SA-01 服裝廠機型(卷對卷)
Model: WD-SA-01 Garment factory model (Rolling to Rolling)
另有服裝廠機型WD-SA-02 (卷對鬆)
Garment factory model WD-SA-02 (Rolling to Relaxing)
染廠機型WD-SA-03 (鬆對卷)
Dyeing factory model: WD-SA-03 (Relaxing to Rolling)



Feather 特徵:
適用於針織、梭織單色布 Suitable for knit, woven monochrome fabric

可檢測疵點
Detectable Defect

破洞、污漬、斷紗、折痕、結頭粗紗、漏針、爛針、飛花、暗花、色紗等等。
Hole, Stain, Broken Yarn, Crease mark, Knot, Coarse Yarn, Dropping stitch, Broken stitch, Flying, Shadow, Color difference etc.



色差: 布邊中邊差、布頭中尾差、布匹與匹差
Chromatic aberration: Color difference in left & right edge and middle (lateral chromatic aberration), color difference in beginning and middle and the end, color difference in different roll fabric from the same dyeing tank.

機器手上布 Robot hand feeding fabric → 展布 Spreading fabric → 除塵 Removing dust → 疵點檢驗 Defect inspection
→ 色差檢驗 Chromatic aberration inspection → 計長寬 Measure length and width → 自動打標 Automatically labeling
→ 自動對邊 Auto edge alignment → 卷布 Rolling fabric → 數據可視化 Data visualization → 評分報告 Score report

技術參數 Technical Specification

疵點檢出率90% (肉眼可見疵點檢出率高達90%)	(The inspection rate of eye visible defect is 98%)
檢驗精度 Detection precision Max 0.01MM	卷裝直徑 Fabric diameter ≤600mm
檢驗速度 Inspection speed ≤60m/min (not include labeling time)	計長偏差 G.L deviation value ≤0.5%
疵點信息 Defect info 大小、位置、類別、圖像 Size, location, type, image	電壓&頻率 Voltage & Frequency 1PH 220V 50HZ
可檢幅寬 Working width 2100mm	功率 Power 4Kw



面料洗水預縮機

Fabric Washing And Shrinking Machine



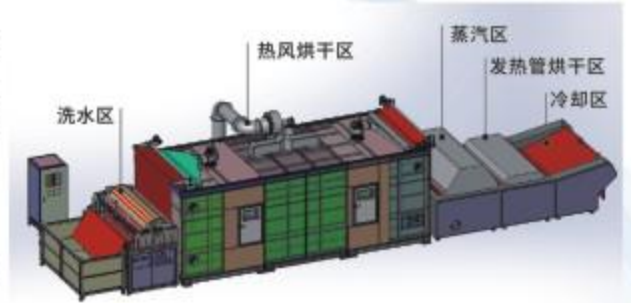
WD-WS-12M

洗水預縮定型機, 包括洗水區、熱風烘干區、蒸汽區、發熱管烘干區及冷卻區。
This Washing and Shrinking Machine includes water washing area, hot air drying area, steam area, heating tube drying area and cooling area.

機器優勢 Advantage:

1. 經過去漿、搓揉、超声波清洗、清水噴淋等一列工序的結合把布料徹底洗水後再進行烘干。經過本機處理之後的布料可直接使用, 一步到位。
2. 布料在搓洗水箱中清洗時, 由於布料的吸水性會帶走部分水, 同時噴淋頭組件的水落入盛水箱, 又源源不斷地向搓洗水箱中補充水, 從而形成水循環, 無廢水直接排放。

1. After a series of processes such as desizing, rubbing, ultrasonic cleaning, and water spraying, the fabric is thoroughly washed and then dried. After using this machine, the fabric can be used directly in next step, which greatly simplifies the fabric finishing processing process.
2. When the fabric is washed in the scrubbing water tank, some water will be taken away due to the water absorption of the fabric, the water of the sprinkler assembly will fall into the water tank in the meantime, and the water will be continuously replenished into the scrubbing water tank, thereby forming a water cycle and no direct discharge of wastewater.



Technician Parameter 技術參數

最大可放布寬度/布料輸送速度 Max roll diameter/ Working speed	40cm / 0-15m/min
最大有效寬度 Max fabric width	2100mm
總功率/電壓/外形尺寸 Total power /Voltage	14kw / AC 380V 50HZ 12470*2610*2210mm

前段-洗水區&熱風烘乾區 Front section- Washing area & Hot air drying area

Washing area length	1170mm	Hot air drying area dimension	6000*2445*2210 mm
Height of Hot air drying area	1319mm	Total hanging length of cloth	88m
Steam ironing cylinder drive motor power	400 W	Steam ironing canister steam pressure	≤0.36Mpa
Steam ironing canister steam consumption	16kg/h	Steam ironing cylinder drive motor power	≤0.5Mpa
Steam ironing canister temperature	120-130°C (Steam heating)	Hot air drying heat source	Electric, Natural gas, diesel, etc

後段蒸汽區&發熱管烘乾區&冷卻區
Back section- Steam area & Heating tube drying area & Cooling area

Steam consumption	100kg/h	Steam pressure	0.4-0.7Mpa
Steam pressure	Adjust ≤200°C	Suction motor power	0.8kw



縮水定型機

Fabric Shrinking And Forming Machine



WD-123S



WD-126S

機器效益

MACHINE EFFICIENCY

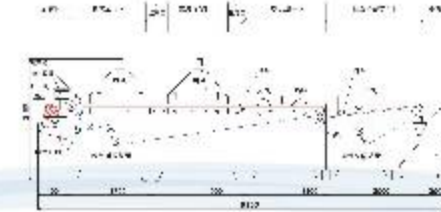
- *穩定面料的縮水率、改善面料物理性能
- *提高面料品質和尺寸穩定性：防止做出來的衣服變形
- *便于生產，提高效率：經縮水加工後，在裁剪、縫制、整燙過程中無需考慮面料的收縮問題
- *提高服裝附加值、提高品牌效益：經縮水加工後布料縮水率控制在國際標準內，尺寸穩定，手感更佳
- *此縮水機是現代使用CAD/CAM自動化設備必備的前道布料整理工序機器。

- *Stabilize shrinkage rate of fabric、improve physical properties of fabric
- *Improve fabric quality and dimensional stability:prevent finished garment deformation
- *Convenient for production, improve efficiency: after shrinking processing, there is no need to consider the shrinkage of fabric in the process of cutting, sewing and ironing
- * Increase the added value of garment and brand efficiency: after shrinking, shrinkage rate of fabric is controlled within the national standard, fabric dimension will be stability, feeling better
- *The shrinking machine is the necessary previous fabric finishing process machine use with CAD/CAM automatic equipment.



多功能面料預縮定型機

Multifunctional Fabric Shrinking And Forming Machine



WD-398-III



WD-188

連續式烘幹、冷卻傳送機

Continuous Drying And Cooling Machine

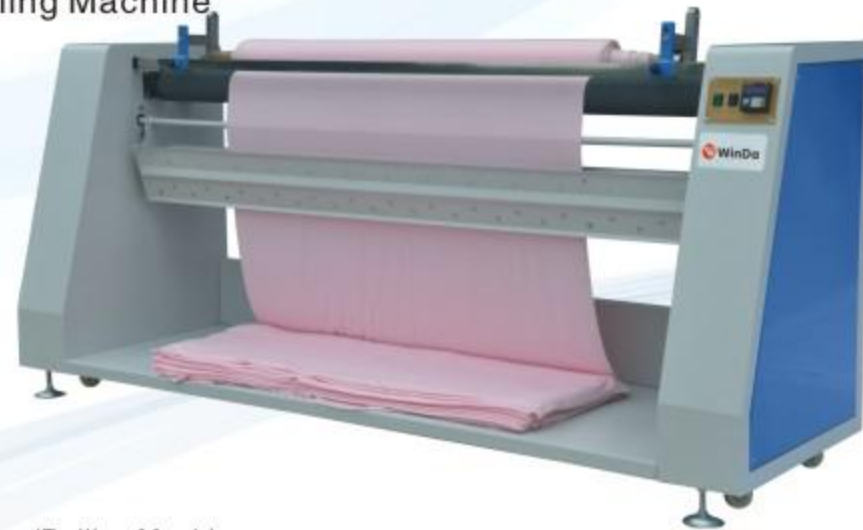


型號 MODEL	有效加工寬度 Processing Width	使用蒸氣量 Steam Consumption	加工速度 Processing Speed	電壓/總功率 Voltage/Power	蒸氣壓力 Steam Pressure	機身尺寸(mm) Machine Size	淨重(kg) N.W	毛重(kg) G.W
WD-123S VVD-123SL	180cm 210cm	<100kg/H	0-30m/min	380V、50HZ 9kw	0.4-0.7 Mpa	3500*2510*1650 3500*2810*1650	1275 1395	1410 1530
WD-126S VVD-126SL	180cm 210cm	<100kg/H	0-30m/min	380V、50HZ 9kw	0.4-0.7 Mpa	5070*2510*1650 5070*2810*1650	1390 1530	1540 1680
WD-398S	180cm 210cm	<200kg/H	0-30m/min	380V、50HZ 32kw/34kw	4-6kg/cm2	8150*2430*2150 8150*2730*2150	3000	3700
WD-188	120cm	20kg/H	0-5m/min	380V、50HZ 15kw	溫度範圍 Temperature Range 室溫-150℃	4600*1900*1300	1400	1600



鬆布、卷布機

Fabric Loosening And Rolling Machine



WD-128S 調速鬆布/卷布機

Speed Adjustable Fabric Loosening /Rolling Machine

功能:

FEATURES:

1、把卷裝布放出，來回折疊整齊，起到自然鬆布作用

Release roll fabric , folded cloth neatly back and forth , it can loosen fabric naturally.

2、可回卷匹裝面料或中途回卷有問題的布料。

It can rewind fold fabric or rewind fabric which have problem.



耗電量：約0.4~0.75kw

WATT:0.4~0.75kw

機身尺寸:

SIZE: 72" 235X92X125(cm)

84" 265X92X125(cm)

94" 290X92X125(cm)

WD-228S-ED

重型布料鬆布，卷布機

Heavy Fabric Loosening And Rolling Machine With Auto Edge Alignment



自動齊邊鬆布、卷布機

Auto Edge Alignment Fabric Loosening And Rolling Machine



(後視圖) Rear elevation



WD-328S-ED

功能:

本機適合針織布及彈性布料鬆布之用，配合電眼自動對邊系統，可使卷裝布匹鬆疊整齊，或可將散裝布鬆疊整齊，以配合自動拉布機使用。

Description:

This machine is applicable to knit cloth and elastic cloth. with sesor system. it can align cloth when doing cloth loosening and stacking-up it can be matched to automatic spreading machine for using.

耗電量：約0.75~1.75kw

WATT: 0.75~1.75kw

機身尺寸:

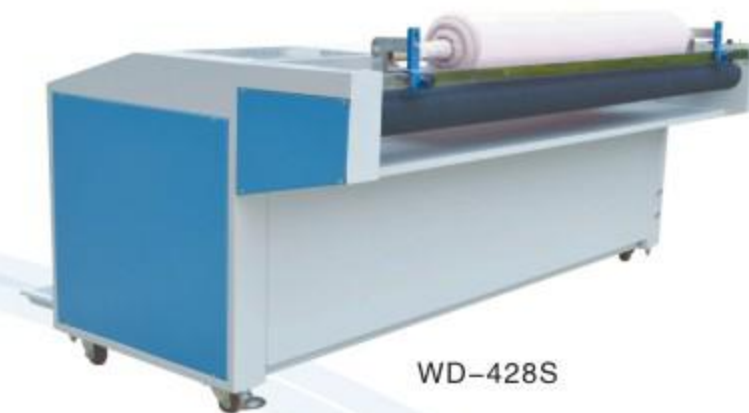
SIZE: 72" 239X101X125(cm)

84" 270X101X125(cm)

94" 295X101X125(cm)

簡易預縮定型機

Loosening Shrinking And Forming Machine



WD-428S

功能：鬆布，蒸汽加熱加濕，蒸汽加熱烘幹，量布

Function: Loosening, Steam heating&Wetting, Steam heating&Drying, Fabric Measuring.

適用於：針織，梭織，彈性布（通用面料）
Best For : Knit fabric ,Woven, Spandex (General Fabric)

加工速度Processing Speed :0~40m/min

耗電量：Watt 約0.55KW/6.55KW

使用蒸汽量：Steam Consumption: <50kg/h

蒸汽壓力 Steam Pressure:3~5kg/cm²

加工寬度:

72" (180cm) , 84"(210cm), 94"(235cm), 120"(300cm)



(後視圖) Rear elevation



對折縫合劈縫機

Automatic Folding And Sewing Machine

自動對邊(選配) WD-285SP-2
With Auto Edge Alignment(Optional)

耗電量: 約 1.8 kw、220V

WATT: 1.8 kw、220V

機身尺寸:

SIZE: 483X184X208 (cm)

WD-285SP (Woven)

功能:

配合斜紋卷布機, 切捆條機使用, 代替傳統的帶刀縫切機用人工對折後再縫布, 大大提高工作效率及品質。

FEATURES:

Use With Bias Fabric Rolling Machine ,
Fabric Cutting Machine , It Replace The
Traditional Sewing Machine, greatly
Improve The Work Efficiency And Quality.

WD-385SP (Knit)

適用於: 各種梭織布料、無紡布、皮革等材料的對折縫合、切邊、劈縫。

Best For : All Kinds Of Fabric , Nonwoven
Fabric, Leather' s Suture , Cutting And
Split.



自動對邊卷布機

Fabric Rolling Machine With Edge Device

WD-225S-ED

Feature:

- The twill coiling can be adjusted between 30° and 70° .
- The coiling speed can carry out stepless speed governing , can coiling freedom, it is convenient to release fabric.
- The Measuring Meter is imported which can ensure accurate measurement of cloth.
- The fabric pressing axis equipped with pneumatic up -and- down , making the operation convenient.
- The edge device function can make the coiling more perfect and minimize the consumption of materials (only WD-225S-ED has this function)
- The fabric's degree of tightness can be adjust at will.

特點:

- 斜紋卷布可在30度和70度之間調節。
- 網布速度採用變頻器進行無級調速, 可點動操作卷布, 方便放布操作。
- 配備進口量碼表, 可準確測量卷布長度。
- 壓布軸配備氣動升降功能, 操作方便, 省力。
- 配備卷布起邊功能, 使卷布效果更佳齊整完美, 使物料損耗降為最低。(僅 WD-225S-ED 配備)
- 捆布鬆緊可隨意調校。

Technical Parameters / 技术参数:

Max. Coiling Width:最大卷布寬度	210cm(84")
Coiling Diameter:卷布直徑	≤40cm
Coiling Motor Power:切布電機功率	0.55kw
Cutting Motor Power: 切刀電機功率	0.33kw
Input Voltage:輸入電壓	220V, 50HZ
Need to use with Compressor 需另接駁空氣壓縮氣	0.4Mpa-0.8Mpa
Coiling Speed:卷布速度	0-40m/min



氣半自動型切捆分條機

Semi-automatic Cutting(Slitter)Machine



左手車
LEFT HAND

功能:

适合于布料、皮革、紙、朴、化纤等材料切成各种规格的条带。
气动移位、定位、高精度量码表、变频调速、主轴、切刀可按不同材料成份任意改变切割速度, 无需担心切口粘连。

Function:

It suitable for cutting fabric , leather , paper , interlining , chemical fabric , etc.
Pneumatic shifting and positioning , high accurate measuring meter , frequency inverter control , the main shaft and cutter will change the cutting speed according to different material , there is no need to worry about the cutting edge may glue together.

Technical Parameters / 技术参数:

Max Processing Size最大工作尺寸	Diameter30cm, length210cm
Min.Processing Size最窄可切	3mm
Dimension of applicable Size用刀尺寸	350*38.1*2.8mm
Voltage電壓	220V、50HZ
Power功率	2.2kw
Need to use with Compressor 需另接駁空氣壓縮氣	0.5Mpa-0.8Mpa



WD-883S



全自動切捆條機

WD-896S

Automatic Cutting(Slitter) Machine

特點:

- 利用氣源壓力推動X軸, Y軸實現自動切捆條工作, 環保節能。
- 主軸及切刀分別由變頻調速器進行無極調速, 方便適用。
- 獨特的切刀安全罩及自動修刀, 吸塵裝置, 使操作適用方便。
- 機械式手動調整捆條寬度, 直觀可靠。
- PLC編程, 文本界面操作, 簡單方便。

Feature:

- Apply the law of the pneumatic push of X axis and Y axis to cut, it is more energy-efficient and environment friendly
- Spindle and cutter do the stepless speed regulation by the frequency coversion governor respectively, it is convenient and practical.
- The unique cutter safety cover, cutter repairing and dust vacuuming exhaust features making the operation safe and convenient.
- Adjust width manually , it is intuitive and reliable.
- PLC programming and using text interface to operate, it is easy and convenient to operate.

Technical Parameters / 技术参数:

Max Processing Size最大工作尺寸	Diameter30cm, length210cm
Min.Processing Size最窄可切	3mm
Dimension of applicable Size用刀尺寸	350*38.1*2.8mm
Voltage電壓	220V、50HZ
Power功率	2.2kw
Need to use with Compressor 需另接駁空氣壓縮氣	0.5Mpa-0.8Mpa





計算機全自動切捆(分條)機

Computer Full Automatic Cutting(Slitter)Machine

适用于布料、化纖、膠布、不幹膠、皮革、紙、模等物料的分條
it suitable for cutting fabric, chemical fabric, rubberized fabric, adhesive tape, leather, paper, interlining, etc

技術參數/Technical Parameters:

最大工作尺寸/Maximum processing size: 外徑/Diameter: Φ 28cm
可裝夾面料長度/Length of clamping fabric : 210cm/232cm/265cm
可切寬度/Width of cutting: 5-1630mm/5-1830mm/5-2130mm
可用刀尺寸/Dimension of applicable size: Φ 350x Φ 38.1/ Φ 32x2.8(mm)
 Φ 400x Φ 38.1/ Φ 32x2.8(mm)
電壓/Voltage: 單相/single phase 220V, 50Hz
功率/Power: 4.6Kw
需另接駁空氣壓縮氣/Need to Use with Compressor: 0.4Mpa-0.8Mpa
外形尺寸/Machine Size: 298/320/353 x 140 x 140 (cm)
包裝尺寸/Packing Size: 311/333/366 x 153 x 158 (cm)
淨重/Net Weight: 700/740/800kg
毛重/Gross Weight: 900/940/1000kg



WD-888S

磨刀機

Cutter Grinder



WD-899S



計算機全自動切捆(分條)機

Computer Full Automatic Cutting (slitter) machine

适用于: 熱塑薄膜、粘合膠、PU、PVC等復合材料。
It is suitable for thermoplastic film, adhesive-glue, PU, PVC etc. composite materials.

技術參數/Technical Parameters:

最大工作尺寸/Maximum processing size:
外徑/Diameter: Φ 28cm
可裝夾面料長度/Length of clamping fabric : 210cm
可切寬度/Width of cutting: 5-1630mm
可用刀尺寸/Dimension of applicable size: Φ 250x Φ 38.1/ Φ 32x2.8(mm)
 Φ 300x Φ 38.1/ Φ 32x2.8(mm)
電壓/Voltage: 單相/ single phase 220V, 50Hz
功率/Power: 3.4Kw
需另接駁空氣壓縮氣/Need to Use with Compressor: 0.4Mpa-0.8Mpa
外形尺寸/Machine Size: 298 x 140 x 140 (cm)
包裝尺寸/Packing Size: 311 x 153 x 158 (cm)
淨重/Net Weight: 850kg
毛重/Gross Weight: 1050kg



WD-999S



全自動立式切布條機

Continuous Tube Slitter Cutting Machine

全自動切布機是利用國外最新技術製造, 主要用于裁切棉毛, 汗布, 彈力布, 絲棉混紡布等圓筒坯料織物。使其成為各種所需寬度的不綳, 供服裝, 內衣等產品滾邊, 滾領, 鑲邊, 鑲領, 嵌條之用, 薄、中、厚布料均可裁切, 是提高裁切布條質量及效益的理想設備。

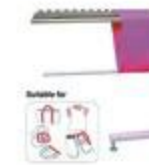


Automatic Trimming Machine adopts latest foreign manufacturing technology, mainly used for cutting such tubular fabrics as cotton, single jersey, bengaline and polyester cotton blender fabrics, to make it become all the strips with different width for the use of piped edge and collar, welting edge and collar and panel of clothes and underwear, etc. Medium and thick cutting, which is the ideal equipment to improve the cutting quality and benefit of strips.

型號Model	剪切速度Cutting Speed	功率 Heat Power	布帶剪切寬度Cutting Width
WD-716	43.3M/m	220V/200w+30w	10-120mm

手動切捆條機

Manual Slitter&bundle Cutting Machine



高速油壓裁斷機:

High Speed Hydraulic Dice Cutting Machine



WD-318AA

特點

操作省力、簡單、故障率低、裁斷力特強、裁斷速度快, 每小時可達1000刀以上。微調裝置, 可輕易得到最佳之裁斷行程, 延長刀模及裁斷板使用壽命。裁斷衝距由10mm-100mm間可任意調整以配合單層或多層之裁斷。刀模簡易設定裝置, 高低刀模調整, 非常簡單、準確、快速。特殊機種大小均可訂作。

Features

Laborsaving and simple operation. Low trouble rates, very strong cutting power, rapid cutting speed. (above 1,000 cuts/hr.) Micro-adjustment device is easily to meet to the optimum cutting strokes. thus expands the duration of the knife mold and the cutting board. Cutting-off distance adjustable between 10mm-100mm to accommodate the cutting needs of single layer and multi-layers. Simple on the knife mold setting and installation. The cutting adjustments of the Knife are accurate and quick and easy. Special models and various specifications are available according to customers' demand.



自動充絨機 Automatic Down Filling Machine



WD-SCR-2P-6G

自動稱重棉絨一體機 Automatic Down&polyester Fiber Weighing And Stuffing Machine



WD-SCM-2P-6G

本产品设有两侧充绒工位，3称交替出绒，是由触摸屏及PLC控制的充绒设备。最高显示精度高达0.01克。
The down filling machine is controlled by PLC & touch screen. It is equipped with two working stations, 3 scales on each side that enable non-stop alternating filling. The highest display accuracy can reach 0.01g.

型號 Model	WD-SCR-2P-6G	WD-SCM-2P-6G
可充材料 Filling Materials	幹燥60絨以上、珍珠棉 Dry Down(60/40&Above),Ball Fiber	珍珠棉，手斯棉，幹燥60絨以上Ball fiber, fake down,dry down(60/40)&above
充絨口 Filling Port	2	2
循環數 Cycle Number	3	3
儲絨量(kg) Storage Volume(kg)	10	10
填充範圍(g)Weighing Range(g)	0.2-15、0.2-30	棉cotton1-25、絨down1-25
精度等級(g) Precision Grade(g)	0.01	0.01
整體尺寸(m)Overall Size(m)	3.8x2.2x2	4.5 x 2.2 x 2.1
電壓 Voltage 最大功率 The Largest Power	220V/50HZ/1.7KW	380V/50HZ/3.85KW

拍棉機 Pat Cotton Machine



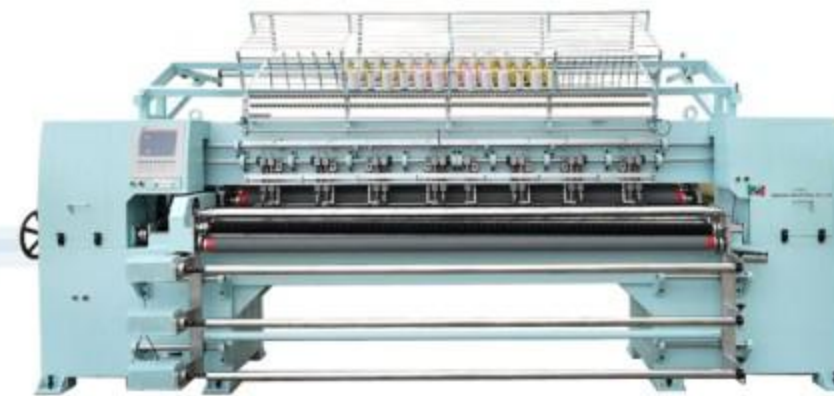
WD-PCM

適合服裝廠羽絨服等各種填充物需拍均勻的服裝設備
Suitable for down cotton clothing and other cotton goods which need pat equably in the garment factory

熱風縫口密封機 Hot Air Seam Sealing Machine WD-HSS250



紵縫機 Computerized Multi-Needle Quilting Machine



Functions Specifications

- Prepared some quilting patterns for your choice., Easy and quick editing of patterns.
- 360random quilting.
- Function to quilt independent patterns.
- On-line help on operation.
- Speed with 550R.P.M;stitches between 2- 6mm adjustable.
- Function of pattern patch-up, can efficiently solve the distorted patterns when quilting the thick materials.
- Simulation display of quilting.

Working Width :64"-94"mm
X Area: 305mm
Sewing Speed:400-500n/m
Quilting Design: 360°

自動魔術貼切縫一體機 Automatic Velcro Cutting-Sewing Machine



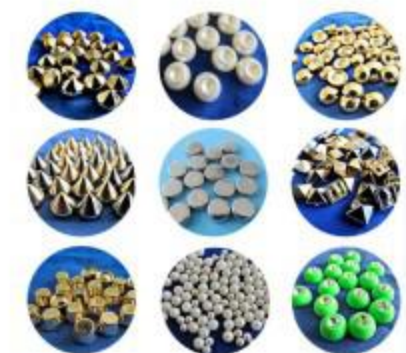
WD-AT6102



釘珠機 Pearl Setting Machine

選用高速氣缸衝壓將四爪釘與珠子、飾釘鉚釘合固定于皮料、革料、布料、絲質料等服裝及手袋、鞋皮革之上。

Used high speed cylinder to make four claw nails, beads, studs and rivets are fixed on leather, leather, cloth, silk and other clothing, handbags and shoes.





小型迷你式粘 合 機 Mini-Type Bonding Machine



用途: Application:
 ▶ 針對平織/針織裁片之粘 合 工作。 ▶ For the interlining and fabrics fusing.

規格 Specification

型號Model	WD-450NS	WD-450GS	WD-520NS	GO-520GS
電壓Power Supply	1P/220V			
馬達功率Motor	40W			
電流功率Power	3.6KW		4.2KW	
最大壓力Max Pressure	1kg/cm ²			
設定溫度Temperature	常溫-200°C			
粘 合 寬度Fusing Width	450mm		520mm	
粘 合 時間Fusing Time	10-34sec			
刮布器Type of Scraper	旋轉刮片Rotary Strip-off			
機器尺寸L x W x H Dimensions(mm)	2000 x 910 x 360	1700 x 910 x 360	2000 x 980 x 360	1700 x 980 x 360
裝箱尺寸L x W x H Packing Volume(mm)	1420 x 950 x 540	1120 x 950 x 560	1420 x 1050 x 540	1120 x 1020 x 560
淨重/毛重N.W/G.W	145/170Kgs	145/170Kgs	170/200Kgs	170/200Kgs



歐姆龍溫控器



日本產鐵氟龍皮帶 Teflon belt



旋轉式刮片 Rotary strip-off

連續式粘 合 機 Continuous Fusing Press Machine



WD-900

WD-600/900/1000 用途:
 ▶ 針對平織/針織裁片之粘 合 工作。
 ▶ 整匹布卷之粘 合 工作(可搭配送、收料裝置)。

WD-600/900/1000 Application:
 ▶ For the woven/knitted fabrics fusing
 ▶ Fusing for the whole roll of fabric and interline. Machine can work together with feeding conveyor and collecting stacker as option.

規格 Specification

型號Model	WD-600	WD-900	WD-1000
電壓Power Supply	3P 220V/380V		
馬達功率Motor	0.24KW		
電流功率Power	9KW	12KW	14.4KW
最大壓力Max Pressure	5kg/cm ²		
設定溫度Temperature	常溫-200°C		
粘 合 寬度Fusing Width	600mm	900mm	1000mm
粘 合 時間Fusing Time	10-34secs		
適配空壓Supply Air Pressure	最小消耗量Min. Consumption 5-10L/H		
機器尺寸L x W x H Dimensions(mm)	3300 x 1360 x 1420	3310 x 1660 x 1420	3310 x 1760 x 1420
裝箱尺寸L x W x H Packing Volume(mm)	2300 x 1340 x 1500	2300 x 1640 x 1500	2300 x 1730 x 1510
淨重/毛重N.W/G.W	660/720kgs		790/860kgs



操作面板



松下變頻器



歐姆龍溫控器



超長進料口



雙加壓直綫式襯布粘 合 機 Double Pressure Straight Linear Fusing Press Series



最新一代設計優越的粘 合 機
 無需延時停機
 更安全更可靠!
 The latest generation of superior design fusing press series machines
 No need to delay the shutdown
 Safer and more reliable!

採用獨立兩段粗輻加壓系統, 第一段壓力將襯布上膠粒均勻分布開, 第二段壓力系統將已溶解的膠粒和面料起到更理想的粘 合 效果. 兩段加壓系統分別獨立控制, 從而實現不同的壓力組合, 使布料與襯布達到完美的粘 合 。

The use of a separate two-stage coarse roller pressurization system, the first section of the pressure will be evenly distributed on the lining of the adhesive particles, the second section of the pressure system will have dissolved rubber particles and fabrics to play a more ideal bonding effect.

MODEL	WD-600N	WD-900N	WD-1200N	WD-600NA
HEATER	10kw	13.5kw	16kw	10kw
VOLTAGE	3P-380V	3P-380V	3P-380V	3P-380V
TEMPERATURE	195° C	195° C	195° C	195° C
MAXPRESSURE	0.5Mpa	0.5Mpa	0.5Mpa	0.5Mpa
SPEED	14M/min	14M/min	14M/min	14M/min
WIDTH	600mm	900mm	1200mm	600mm

自動收料機

Automatic Receipt Machine



Model	Collecting Width	Collecting Length	Engery consumption	0.4MPAS air consumption	production takt
WD-500-2	40MM-250MM	80MM-1050MM	220V/0.3KW/H	0.3-0.5MVH	(500-1000)*2
WD-600-1	40MM-600MM	80MM-1050MM	220V/0.2KW/H	0.2-0.4M3/H	500-1000
WD-600-2	40MM-300MM	80MM-1050MM	220V/0.3KW/H	0.3-0.5MVH	(500-1200)*2
WD-600-3	40MM-400MM	80MM-1050MM	220V/0.4KW/H	0.3-0.8M3/H	(500-1200)*3
WD-900-1	100MM-900MM	300MM-150MM	220V/0.3KW/H	0.2-0.4M3/H	500-1000
WD-900-2	40MM-450MM	200MM-1500MM	220V/0.3KW/H	0.3-0.5MVH	(350-1000)*2
WD-900-4	40MM-600MM	200MM-1500MM	220V/0.5KW/H	0.5-1.2MVH	(350-1000)*4



連續檢針機 Conveyor Type Needle Detector

用途：
連續式檢針機可用來探測藏在各式縫件產品（如男裝、女裝、童裝、內衣、和服、夾克、床上用品、鞋帽手套、長毛絨玩具、地毯、衛生用品）中的針、斷針及其他鐵質碎片等，還可在藥品、食品（食用菌、角、肉、果品等新鮮及其制品）衛生材料等的檢測，服務輔料拉鏈、鈕扣的檢測，還可用於非鐵磁性材料如銅、鉛、鋅、造紙、橡膠、化工工業原料等檢測時混在其中鐵質碎片等。

Application：
Automatic conveyor magnetic induction metal detector can use it to detect the needle or ferrous pieces of sewing products. (Such as: male clothing, female clothing, child clothing, underwear, kimono, jacket, bedclothes, shoes, gloves, cat, toll, blanket and healthful ware.) It also can use in material medical and food...etc. (Fish, meat, fresh fruits...etc, and its manufacture.) To detect it. And it can detect the clothes of slide fastener, button and use it to detect the ferrous which mixed in nonferrous material, such as copper, aluminum, zinc, paper, rubber, chemicals...etc

平臺式檢針機
Platform Needle Detector Machine



手持式檢針機
Handheld Needle Detector Machine



WD-1600H標準型



OPTION

吸綫屑機 Thread Sucking Machine

吸綫屑機可產生強大吸風力，吸去貼附在衣物上之浮綫、塵垢、雜物等。使衣物光潔美觀，更可用作反褲用途。適用於各類時裝、恤衫、西褲、裙袍等制衣產品，提高品質，增加產量，節省人力。特長吸臺，操作簡易快捷，效果顯著。

Thread Cleaning Machine Can Produce Strong Suction, Can Sucking Thrad, Dust, Sundries On The Clothes, Making The Clothes Look Bright And Clean.
Best For All Kinds Of Garment, Shirt, western Style Pants, Gown Etc. It Can Improve Product Quality, Increase Productivity And Save Labour. It Is Easy And Convenient To Operate With Significant Effect.

單速掃毛機 Thread Sucking Machine (Single Speed)



WD-850

強力反褲機 Trousers Reversing Machine



WD-830S

強力反衫機 Cloth Reversing Machine



WD-880-1

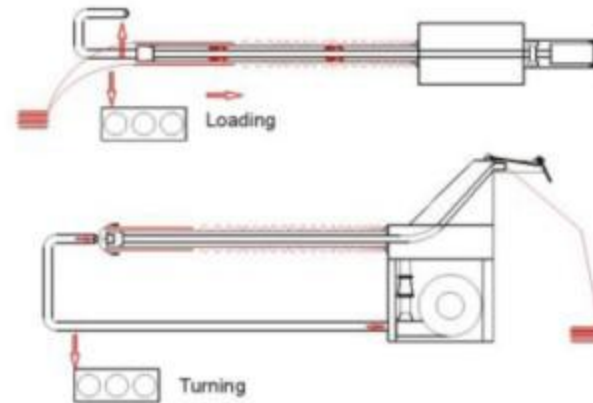
Model型號	WD-688	WD-688-II	WD-DT-A	WD-DT-B	WD-4-450
Detection Method 探測方式	0.8MM steel to small scissors 鐵球 ϕ 0.8mm				
Detection Sensitivity 探測靈敏度	Magnetic Induction 磁感應		Max 110mm height by steel ϕ 0.6*L33 鐵制大針 ϕ 0.7*L25mm 在探測面上最大約80mm; 鋼針 ϕ 0.6*L33mm 在探測面上最大約110mm.	20-30mm Hi-30-40mmWidth an Iron setting needle of ϕ 0.7mm, length 25mm; ϕ 0.7*L25mm 鐵制大頭針在探測面上 (低: 20-30mm,高30-40mm)	Magnetic Induction 磁感應
Detection adjustment 感應度調節	MAX.100 steps/channel	10 steps	6steps	Lo-Hi 2 steps	10 steps
Detection Width 探測面	600mm	600mm	160*500mm	50*25mm	600mm
Power Source 電源	AC100-240V,50-60HZ		AC85-265V 45-65HZ	1.5V AA*2 礮性電池	AC100-240V,50-60HZ



圓筒布翻布機 Tubular Turning Machine

重型圓筒布翻布機 Heavy Fabric Air Turning Machine

適用於圓筒布坯染色前翻布加工。
Suitable for turning over the cylinder cloth before dyeing.



注：
WD-810適用於克重200以下的面料
WD-810S適用於克重300以下的面料
Remark：
WD-810 is suitable for fabrics weighing less than 200g
WD-810S is suitable for fabrics weighing less than 300g



WD-SB-SW超聲波除漬臺 Supersonic Wave Spot Removing Machine

不銹鋼工作臺面及臂架，原身抽風機
Vacuum board & swinging arm made of stainless steel, build-in vacuum system.
一支除漬藥水槍（意大利產）
One spot removing medicinal liquid gun (Italy gun)
一支吹風槍
One blowing gun
兩個溶劑存罐
2 Tanks for solvents.
一支超聲波槍
Equipped with supersonic wave gun
需另接駁空氣壓縮氣
Need to connect with steam, air compressor (3ph)
機身尺寸Machine size: 116x42x176(cm)
重量Weight: 50kg



全自動拼接橡筋機 Automatic rubber splicing machine

产品特点Features

- 1.集多项创新发明专利于一体。
- 2.工艺流程：全自动拼接橡筋机操作(一次性完成)。
- 3.标准时：
单轨：7.1秒/件(橡筋宽38mm，花样宽8mm长度37.8mm，总针数152针)。
双轨：单针效率X3。
- 4.小时产量：单轨507件/小时；双轨：单轨效率X3。
- 5.人工配置：1人1天单机科操作三台机器，可生产15021件。
双轨：单轨效率X3，1人可跟3台机。
- 6.人工成本：降低成本，提升生产效率和空间利用率，减少人员。(从而实现水费、电费、租金、员工宿舍、饭堂、社保等制造费用和管理费用的降低)。

1. Hold national patent.
2. Process flow: automatic elastic rubber sewing machine (one-off completion).
3. Standard working hours
Monorail: 7.1 seconds/piece (rubber width: 38mm, figure width: 8mm, length: 37.8mm, needle number: 152).
Double rail: two times efficiency of Monorail.
4. Hours of production: monorail: monorail 507 pieces/hour;
Double rail: two times efficiency of Monorail.
5. Manual configuration:
Monorail: one person in one day can operate three machines, produce 15021 pieces.
Double rail: one person in one day can operate three machines, two times efficiency of Monorail.
6. Save management fees:
Lower labour cost, improve production efficiency and space utilization. Thus can reduce water, electricity, rent, social security and dormitory fee.

主要規格Main Specification

型號 Model	WD-XJ210E-01
平縫 Sewing	-
兩倍擺梭 Tow fold swing	2
範圍 Range	220mm*100mm
針距 Stitch	0.05*12.7mm
剪刀圖案 Scissors pattern	-
氣動掃梭 Pneumatic sweeping	-
轉速圖案 Speed pattern	2700
耗氣量 Gas consumption	1.8L
機頭 Machine head	JUKI OR BROTHER (optional)



OPTION:
自動對字母
Automatic Logo
Recognition



OPTION:
自動收料器
Auto receiver





自動穿繩機

Automatic String Thrusting Machine



傳統工藝
Traditional Technology
20-30 秒/根
傳統手藝疲勞高，效率低，20-30 秒/根
Traditional craftsmanship is high in fatigue and low in efficiency ,20-30 second/root
褲繩、帽繩靠手工穿針完成穿繩，效率低、勞動強度大。
Pants rope and cap rope are worn by hand through the needle. Low efficiency and labor intensity.



智能工藝
Intelligent Technology
10-15 秒/根 10-15S/ PCS
30-55%
自動降低勞動強度，提高效率約30-55%
Automatically reduce labor intensity and improve efficiency by about 30-50%



LS6021S

穿繩孔眼使用範圍

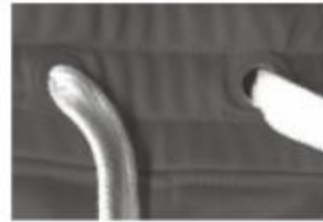
Application of cord hole thrusting



平頭鎖眼孔
Flat Button Hole
切口Incision≥8mm



鳥眼鎖眼孔
Bird Eye Hold Hole
孔眼直徑
Diameter ≥8mm



金屬氣眼孔
Meldl Air Hole Hold
孔眼直徑
Diameter ≥8mm

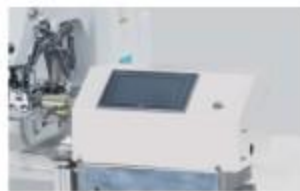
自動卷帶機

Automatic Draw Cord Stitch Machine

主要適用於自動彎曲折疊圓圈型的各種帶子。適用於箱包、童裝等各種圓圈型帶子的縫制（縫制的圓圈帶折疊的最大長度100mm，帶子的最大寬度40mm）
Mainly applicable to automatic bending folding circle type of various tapes. Applicable to the luggage, children wear and other round belt of the sewing (sewing the circle with a maximum folding length of 100mm, the maximum width of the tape 40mm)



WD-AT6501



編繩機

Rope Braiding Machine

Application用途:

适用于服装辅料编织鞋带，松紧带，运动服拉绳、花边带、家居用品带、曲边带、悬挂吊带、双色带，三色带，三棱绳，四棱绳，方形绳，子母带，多色带等。
Garments accessories braiding machine is applied for the production of round & flat shoelace, elastic cord & lace, flat lace, zigzag lace, piping cord, double color cord, Triangular cord, square cord, quadrangular cord, and multi color lace for national costume, etc.etc.

Suitable for material 适用材料:

丙纶、涤纶、PE、HDPE、棉、尼龙、大力马线、橡筋、高分子材料等其他复合材料。
PP,Polyester,PE,HDPE,Cotton,Nylon,Dyneema,etc.



WD-32-2-90

半自動帶子打頭機

Semi-Automatic Cord Tipping Machine

本机采用人工送带，自动送片、包裹、切断的鞋带头包机，可包裹鞋带、礼品袋、服装袋及装饰带等，带子长度可随意调节。
This machine adopts manual cord feeding, automatic film feeding, covering and cutting shoelace heading machine, which can cover shoelaces, gift bags, clothing bags and decorative cord. The length of the cord can be adjusted.



WD-SCTM120

單頭綉花機

Single Head Embroidery Machine

可以做平綉，成衣綉，帽綉，鞋綉等各種功能。
Can do flat embroidery, ready-to-wear embroidery, hat embroidery, shoe embroidery and other functions.



WD-EM120





電子花樣機 Electric Pattern Sewing Machine



是一款集精密機械、氣動與電腦技術于一體的機電一體化專用縫紉設備。該產品採用觸摸屏操作面板，使操作方便、直觀，真正實現傻瓜式操作。可直接通過USB接口輸入縫紉花樣。適用於各種厚料、皮革等面料，可以使用在靈活的花樣縫制，小部件縫制，各種小的圖案以及加固縫等工序中。諸如商標、銘牌、標籤的縫制，帽子、腰帶的菊花孔的特殊套結縫制。

It is a specialized sewing equipment of mechanical & electrical integration, combined with precision machine, pneumatic and computer technology. It adopted liquid crystal touch screen control panel, operate more conveniently and easily. Users could input the sewing pattern by inserting USB flash disk. More easily used in flexible pattern sewing, small part sewing, various small figures such as trade mark, brand plate, label and the chrysanthemum holes in, waist belt etc.



多功能商標自動剪折機 Multifunction Label Cutting & Folding Machine

適用於多功能商標剪摺之機型。本機在設計上，調整各部位簡單方便。多種型態商標剪摺操作自如。

It is suitable for multi-function trademark cutting and folding machine. In the design of the machine, the adjustment of each part is simple and convenient. Various types of trademarks can be cut and folded freely.

- Folding Method:
 雙邊摺加對摺 / 雙邊摺、三角摺、對摺、信封摺
 Book Cover Fold; End Fold; Center Fold; Envelop Fold;
 Hanging Fold;
 Cutting Method:
 冷切 熱切
 Cold Cut Hot Cut



WD-LCFM60



全自動水洗標機 Full Automatic Washing Label Machine

產品簡述

Product Introduction

邁卡GI21全自動水洗標機，採用先進的技術，從成卷商標開始，到成品縫制完成只需要這一臺機器，一步到位。省人工、提效率、降成本。完成全部工序：剪切、折疊、成品縫制的時間為8S/件，而普通人工時間為30s/件。

Maica GI21 series—full automatic washing label setter, with advanced technologies, this machine is all that needed from the rolled washing labels to the finished product in one step. It can save labor, improve efficiency, and reduce cost. The efficiency of GL21 is 8s/pcs, while the ordinary manual efficiency is 30s/pcs



產品優點

Product Advantages

高效率：一步到位 更省人工 High efficiency: one-step process, more labor saving

GI21機器 全部工序 一人操作 GI21: one person operates all the processes



8小時 8 hours

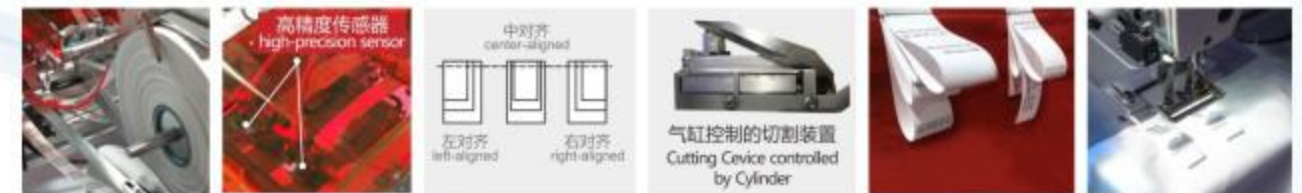


手工縫制 三道工序 三人操作 Manual operation: three persons operate three processes



1 效率对比 Efficiency comparison

GL21机器：仅需一人操作一台机器，8秒/件，每8小时完成3000件；手工缝制：需要三道工序三人操作，30秒/件，每8小时完成1100件。
 GL21: Only one person is required to operate one machine, the efficiency reaches 8 s/pcs, 3,000 pieces per 8 hours; manual operation: three operations are required for three operators, the efficiency reaches 30 s/pcs, 1,100 pieces per 8 hours.



2 六道全自動工序，實現一步到位 Six fully automatic processes, one step operation

通過商標的自動傳送、自動長度識別、自動剪切、自動折疊、自動對位、自動縫制的功能實現一次性完成最多四個水洗標的縫制，極大地提高生產效率，降低了縫制成本。
 Through the automatic feeding, length recognition, cutting, folding, positioning, and sewing of labels, GL21 achieves to sew maximum four washing labels at a time, greatly improving the production efficiency and reducing the cost.



標籤打印機 Label Printer



產品特點 Product Features

A4打印機，最大放紙寬度22cm,最大打印寬度21.95CM，可滿足大幅標籤的打印要求。
工業級打印頭，大大提升機器的使用壽命，返修率低。
打印精度高，速度快，適合工業高速、大量列印的需求。
機身結構系一體成型鋁合金外殼，堅固、扎實、穩定性高。
支持數據庫打印，工作更省心。
A4 printer, maximum paper width 22cm, maximum printing width 21.95cm, can meet the requirements of large label printing.
Industrial printing head, greatly improve the service life of the machine, repair rate is low.
High precision, high speed, suitable for industrial high speed, a large number of printing needs.
Fuselage structure is made of aluminum alloy shell, which is strong, solid and stable.
Support database printing, work more easily.



WD-FT8304

標籤打印機 Fully Automatic Hang tag Labeller/Printer



Application:
Suitable for all kinds of industry that require manual pasting of labels

Descriptions:
This machine is designed for packing department and can save a lot of labour in pasting labels on hang tags. The operation is very simple. First, use the accompanied software to design the required format of the label and the other information such as production date, lot number, and serial number. Second, send the format to the machine via the internal WiFi network.

Operator loads the hang tags into the material container and mount the roll of blank labels to the wheel.

Align the label position. Then press the start button. The labelling process commences automatically.



全自動釘裝機 Plastic Staple Attacher

Application:

- *This kind of machine can staple paperbrand-label on the jeans waistband ticket anywhere you prefer.
- *The machine allows the staples applied vertically to suits and sportcoat sleeves.
- *The machine allows the staples attached leather of paper brand-label on the wait of trousers.



WD-PSA

可以快速將紙牌訂在牛仔褲後褲袋上和任何位置
可以將商標訂在西裝衫袖口上
可以講皮牌或紙牌裝訂在西褲褲腰上

單卡自動送卡打標機(工字膠針) Single Tag Automatic Feeding Tagging Machine(H Shape Pins)

WD-TM 7001 is used to do tagging for t shirts (single tag) and toys, the machine can feed the tags automatically, the speed can be fast as 1 second 1 tagging, the tag width range is 10mm -80mm.



WD-TM7001



自動送卡打標機(套環膠針) Tags Automatic Feeding Tagging Machine(Loop Pins)

WD-TM 8001 is used to Hang Tags to clothes (loop pins), Kitchenware, Garden tools, Slippers and so on.



WD-TM8001



三卡自動送卡打標機(工字膠針) Three Tags Automatic Feeding Tagging Machine (H Shape Pins)

WD-TM 7003 is used to do tagging for t shirts (3 tags) , Pants, Underwear, Sports wear, Sweaters.



WD-TM7003





輪子式貼膠機
Roller Style Adhesive Tape
With Trimming Edge Machine



WD-701

無縫文胸包邊機
Seamless Brassiere Folding Machine



WD-702-02

蒸汽平板壓燙機
Hot Press With Steam
Ironing Machine



WD-203

自動文胸點膠機
Automatic Clicking Glue
Machine For Bra



WD-DJ855



用途:適用於各秒彈性面料熱壓定型
Application: It's suitable to mold various kinds of stretch fabric.

WD-D1-C

自動切縫挂繩機
Automatic Hanger Loop
Stitch Machine



WD-KP00B-G



子彈頭定型機
Bullet Molding Machine



電腦文胸背扣機
Automatic Bra Buckle
Sewing Machine



WD-BK1700-22





全自動切帶機
Auto Tape Cutting Machine Series



WD-126B

全自動橡筋帶切帶機
Automatic Rubber Tape Cutter



雙帶
For Double Tape



WD-120R

全自動圓角(魔術貼)切斷機
Automatic Round (Velcro) Cutter



WD-120

全自動斷帶機(冷或熱刀)
Automatic Cutting Machine
(Cool or Hot knife)



WD-120L

全自動鬆緊帶切斷機(配鬆帶裝置)
Automatic Elastic Tape Cutting Machine
(with loose colth device)



WD-200

自動商標切斷機(帶傳感功能)
Automatic Cutting Machine for
Trademark (Hot&Cool Knife)

超聲波切縫機WD-20KI
Ultrasonic Sewing Machine



褲仔打緊機WD-20KS
Ultrasonic Panties/Underwear
Welding Machine



簡易切帶機WD-BHCJ-B
Ultrasonic simple belt
/strap cutter



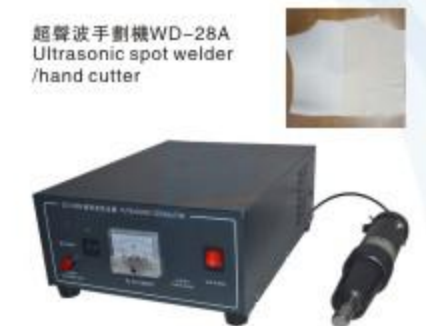
超聲波花邊機WD-20B
Ultrasonic Lace Machine



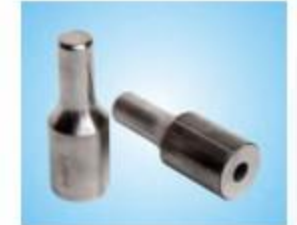
全自動切帶機WD-20KQ
Automatic Belt/Strap
Cutting Machine



超聲波手割機WD-28A
Ultrasonic spot welder
/hand cutter



花輪&模具
Rollers & Mould



Model:型号	Tool:刀具	Cutting Width(Max) 最大切斷寬度	Cutting Length 切斷長度	Cutting Speed 切斷速度
WD-126B	Cool Knife	70mm	100-99999mm	37pcs/min
WD-120R	Cool Knife	110mm	1-99999mm	120pcs/min
WD-120	Cool or Hot knife	110mm	1-99999mm	120pcs/min
WD-120L	Cool Knife	110mm	1-99999mm	120pcs/min
WD-200	Hot&Cool Knife	90mm	1-99999mm	120pcs/min



氣動裝鈕機

Pneumatic Button Attaching Machine



WD-SQ1

半自動打鈕機

Semi-Automatic Button Machine



WD-DS20



全自動打鈕機

Full Automatic Button Machine



WD-DS40



WD-DS70



WD-DS150



帶logo 鈕扣
With the logo button

服裝點位機

Button Making Machine



WD-BM300



特制點位頭
Special Point Bit Head



擋板紅外線保護功能
Infrared Protection Function



紅外線定位
Infrared Positioning



隨意增減點位頭
Increase or Decrease Point Head Random

全自動送扣機

Automatic Button Feeding Machine



自動鎖扣眼機

MAICA MA04 Automatic Button Holes Indexer



Patented



平臺型鉤針縱向雙重環縫鏈式打纜縫紉機 Multi-Needle Smoking Machine

適用薄針織品、喬其紗、中厚料以及堅固呢等縫料的裝飾縫紉。可平縫、抽褶、打褶等,上下綫使用普通綫;如下使用特定的橡筋綫就可對薄料做彈力抽褶打攪。

Smocking machine can be used on thin knitted fabrics and Georgette as well medium thick knitted fabrics and denim. As double vhairstitch is formed, it is suitable for all kinds of products, By rising general thread for upper and lower thread, plain or shirring smocking can be formed. Further, if you should use specific elastic thread for lower thread, elastic shirring smocking can be formed which is suitable for thin materials. In order to make smocking patterns, cams to be provided in plenty are used.



WD-1433P

自動打條機 Automatic Tucking Machine

特點 Features:

打條(折)寬幅可調範圍: 2.5mm-55mm Tucking width is from 2.5mm-55mm

打條長度可調範圍: 0mm - 1300mm Tucking length is from 0mm-1300mm

當在自動縫紉一系列的打條時, 每條打條的寬度和長度可以不同和根據需要調試。

When tucking, Each tucking width and length of can be different and adjusted as needed.

Sewing by Brother S-7200c-303

采用PLC (可編程控制器) 和觸摸屏控制生產和調節。 Use PLC (Programmable Logic Controller) and touch screen to control production and adjustment.

一個工人可以同時操作2-4臺設備, 提高生產效率。 One worker can operate 2-4 sets of equipment at the same time, improving production efficiency.



WD-ATM800



參數 Parameters

Supply 電源	AC 220V 50/60 HZ
Power 功率	1000W
Machine Head 機頭	Brother S-7200c-303
Air Pressure 氣壓	Min 90 PSI-Max 120PSI
Dimension 尺寸	1500 (L) *1303(W)*1200(H)MM
Net Weight 淨重	250KG



修綫頭機 Thread Trimmer

臺式修綫機
Table Style Thread Trimmer

WD22-12, WD32, WD26-12



Model 型號	WD22-12	WD32	WD26-12
Power 功率	180W-430W	60W-330W	180W-430W
Frequency 頻率	50/60HZ	50HZ/430HZ	50/60HZ
Revolution 轉數	2850-3450RPM	400-5000RPM	2850-3450RPM
Voltage 電源電壓	220V		

電動研磨機 Electric Gringer



WD-FS

繞綫機 High Speed Thread Winder



WD-20R(2 head)
WD-40R(4head)

剪褲耳機 Belt Loop Trimmer



WD-LT1080-42

激光自動開門襟機 Automatic Placket Opening Machine



WD-LM-05

適用於: 服裝T恤衫單邊門襟、雙邊門襟、開一字袋等各種門襟同時也可以開單層袋, 雙層袋, 拉鏈袋, 側邊袋, 袋蓋, 袋口, 領子, 可貼標商當普通花樣機等縫制切割修邊縫制。實現一機多用。
Suitable for garment: T-shirt single side lapel, double side lapel, pocket welting, etc
Suitable for single jetted pocket, double jetted pocket, zippered picket, side pocket, pocket cover, collar, sewing label. When using as the ordinary pattern sewing machine, it can sewing cad cutting. It is a multi-use machine.





分色箱 Color Assessment Cabinet



以上所有開關都配有指示燈

WD-6-1(European Standard)歐洲標準
H.M:Hour Counter 計時器具 P: Power 總開關
D65:Daylight 日光 (6500k*2pcs)
F:Roomlight 室外 (2300——2800k*2pcs)
B(UV):Ultraviolet 紫外光 (*1pcs)
TL84: Windowlight 櫥窗光(4000k*2pcs)



以上所有開關都配有指示燈

WD-6-2(USA Standard) 美國標準
H.M:Hour Counter 計時器具 P:Power 總開關
D65:Daylight 日光 (6500k*2pcs)
A:INC"A射燈 (2865k*2pcs)
CWF:Cool White 白光 (4150k*2pcs)
B(UV):Ultraviolet 紫外光 (*1pcs)
TL84: Windowlight 櫥窗光(4000k*2pcs)

色卡 Pantone



取樣機

Gsm Circular Cutter

(With GMS Weight Scale)

應用範圍 Application scope:
textile, papermaking, packaging, testing and research, etc.
Textile fabrics, paper, cardboard items such as the calculating unit weight of special sampling equipment, has a wide range of sample size, high precision, easy operation, etc
紡織、造紙、包裝、檢測和科研等行業。
紡織布料、紙張紙板等物品計算單位重量的專用取樣器具，具有取樣尺寸範圍寬、精度高、操作簡便等優點



鈕扣測試拉力儀

Universal Mechanical Safety Tester

Safe Guard is a patented safety test instrument that provides a means to accurately measure how safe accessories are attached in a product. It is also used to compare a variety of accessories from different vendors in the process from product design to production so that we can safeguard our consumers.

Unlike others, Safe Guard has been adopted by all leading lads. The clamping force if other snap pull testers can not be kept constantly. This is a major reason of why Safe Guard is better approved by testing specialists&major retailers.

測試和記錄成衣，玩具，鞋類等加裝附件後的拉力分離強度，測試他們是否容易鬆脫而造成機械性的損害，如利邊，利腳等。
在客戶在購配件時，亦可有效地比較各供應商的安全品質和工人的安裝技術是否出現問題。



幹濕擦染色勞度測試儀

AATCC Testing Kit



Option 选配

紡織品濕度計

Humidity Meter



手動彈力測試儀

Gap Approval Stretch Test And Extension Meter





恒温儀 Humidifier



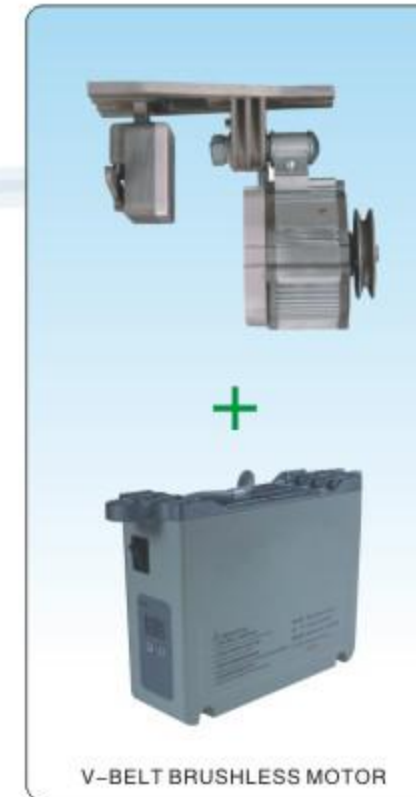
型號Model	AS-M12L
使用溫度範圍 Operating temperature range	1-40°C
顯示方式 Display mode	微電腦RH30-90%隨機顯示。 RH30-90% random display on microcomputer.
控制方式 Control type	濕度百分之一任意設定和控制 humidity 1% arbitrary setting and control
加濕方式 Humidification style	高效濕簾加濕 efficient humidification of wet curtain
移動方式 Moving style	底部裝有萬向輪，移動自如 the bottom is equipped with universal wheel, moving freely
最大加濕量 Maximum humidification	12KG/小時 12KG/h
水箱容量 Water tank capacity	30L
循環風量 Circulation air volume	1800m3/h

工業吸塵器 Dust Cleaner

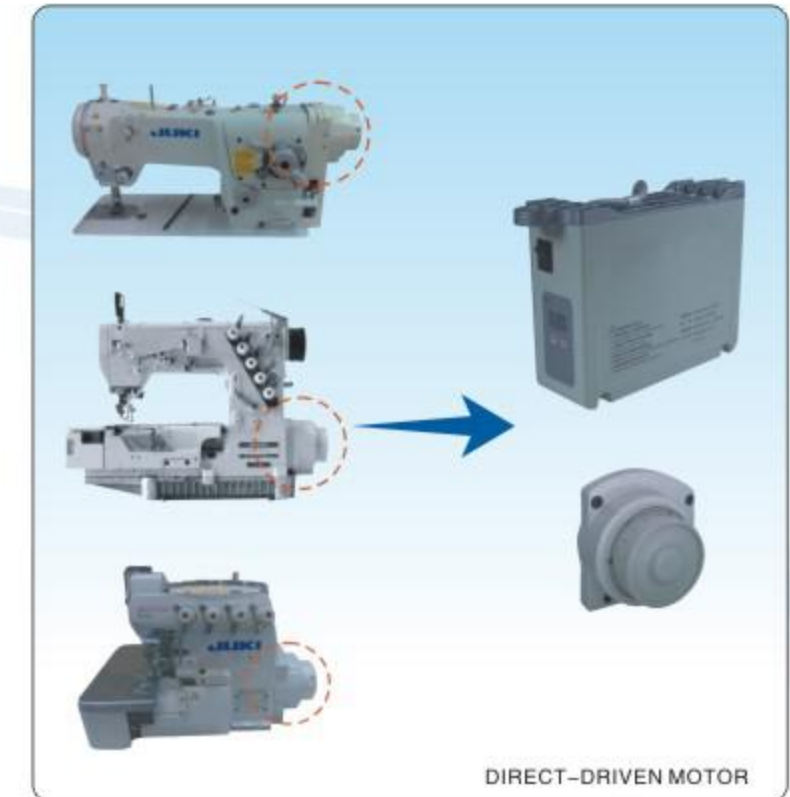


容量Capacity	100L
電壓/功率Voltage	220V, 50Hz/5400W
噪音Noise	<82dB
真空度Vacuum degree	23.1kPa
過濾系統Filtration system	Multi layer
電線總長Wire length	10M
淨重/毛重Net Weight/ Gross Weight	30.4KG/ 34.44KG
包裝尺寸 Packing Size	62*53*104cm

Dry with easy absorption of iron, wood chips, melon shell and other dry objects
Wet used to clean up residual juice, dirty water and other liquids.
幹用：輕鬆吸走鐵屑、木屑、瓜殼等幹性物體。
濕用：適用於清理殘汁、臟水等液體。



V-BELT BRUSHLESS MOTOR



DIRECT-DRIVEN MOTOR

Comparing with clutch motor, it can save at least 70% power.
與離合電機相比平均可省電達70%以上

•Specification:

• A servo motor only takes power when it runs, while a clutch motor takes power when it power on. Taking calculation by 10 hour working per day, the clutch motor take 4 kilowatt, while the servo motor only take 1.2 kilowatt, so it can save 2.8 kilowatt per day. Taking calculation by 300 working day per year.

• 伺服電機僅在運轉時有功率消耗，而離合電機為開機及消耗，以每天每臺機器工作10小時計算，離合電機約4度電，而伺服電機祇需要1.2度電，每天節約2.8度電，每年以300天工作計算可節約40度電。

型號Model	適配機型Applications	轉速Speed	電壓&功率&頻率 Voltage& Power&HZ
WD-03-550	It could fit for any kind of sewing machines	300-6000 r/min	220V ± 40V&550 W&50Hz/60Hz
WD-03-750			220V ± 40V&750 W&50Hz/60Hz
WD-03-550	JUKI LZ2208/2284/2286 Series	300-7000r/min	220V ± 40V&550 W&50Hz/60Hz
WD-03-700	PEGASUS M700 series		220V ± 40V&700 W&50Hz/60Hz
WD-03-500	PEGASUS W500/600 series		220V ± 40V&500 W&50Hz/60Hz



電子拖布輪系列

Puller of sewing machine

包縫機電子拖輪
Electronic puller for overlock sewing machine



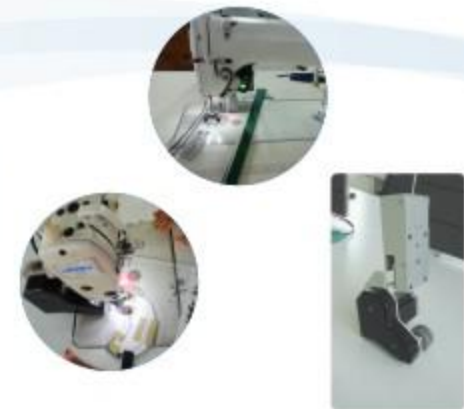
綑縫機電子拖輪
Puller for interlock sewing machine



模板電子拖輪
Puller series for template

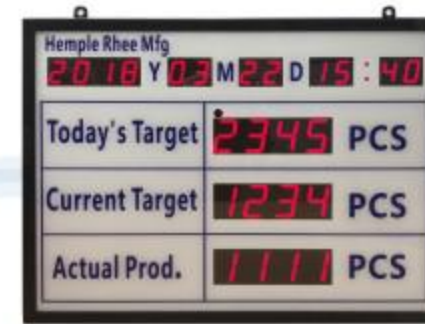


全驅式智能拖輪
All-Drive intelligent puller



產量計數屏

Digital Production Board



節能燈

Energy Saving Led Light



T8 LED LIGHT



T5 LED LIGHT

LED縫紉機燈

Led Lamp For Sewing Machine



PICTURE	MODEL	VOLTAGE	POWER	LINK	APPLICATION	REMARK
	WD-806ML	AC110V 220V 380V	0.5W	Motor Switch	Any Sewing Machine	6粒貼片3014LED,臺灣芯片。磁鐵型 恒流源帶隔離
	WD-806MLT	AC110V 220V 380V	0.5W	Motor Switch	Any Sewing Machine	6粒貼片3014LED,臺灣芯片。磁鐵型 功率0.5W五檔調光恒流源帶隔離
	WD-806MU	AC110V 220V 380V	0.5W	Motor Switch	Any Sewing Machine	6粒貼片3014LED,臺灣芯片。磁鐵型 恒流源帶隔離
	WD-806MUT	AC110V 220V 380V	0.5W	Motor Switch	Any Sewing Machine	6粒貼片3014LED,臺灣芯片。磁鐵型 五檔調光恒流源帶隔離
	WD-18A	AC110V 220V 380V	0.5W	Motor Switch	Any Sewing Machine	18粒F5燈,臺灣芯片。磁鐵或者螺絲支架型,帶插頭, 功率0.9W



全伺服橢圓形成衣印花機 Full-Servo Oval Printing Machine

機器特點:

- 1、套位精準，誤差在±0.01毫米之間。
- 2、適用於成衣印花，支持專色網點、拉漿、植絨、壓燙、水漿、膠漿、熱固油墨、厚版、拔印等。
- 3、全伺服，精準度高，噪音低、功耗低，節能環保。
- 4、快速拆卸網框，大小網框通用。
- 5、網版無需取下擦洗，可抬起印頭直接擦洗即可。
- 6、任意位置皆可使用壓燙機、植絨機等輔助設備，方便實用。

FEATURES:

1. High accuracy, the printing accuracy is ± 0.01mm.
2. Suitable for existing-garment printing.
3. All Servo Motors with high accuracy and low power consumption.
4. Easily dismantlable printing frame, available for different size.
5. You can clean the printing frame without unloading.
6. Relevant equipments such as pressing machine, heater are highly combined with the printing machine.



WD-H9



WD-H9	6PCS	8PCS	10PCS	12PCS	14PCS	16PCS	18PCS	20PCS
臺板數量Printing Stations	24	30	36	42	48	54	60	66
標準可印面積 Size	60CM * 70CM							
總功率Power (kW)	4.5	5.5	7.0	8.0	9.0	10.0	11.0	12.0
耗氣量Gas (L/min)	350	500	650	800	950	1100	1250	1400
設備長度Length(cm)	1021	1249	1477	1705	1933	2161	2389	2617
設備寬度Width (cm)	330							
設備高度Height (cm)	150							
設備重量Weight(kg)	6000	7000	8000	9000	10000	11000	12000	13000
產能 Production (H9-16CS)	700PCS/H							



數碼印花機 Digital Printing Machine



機器特點:

- 1.數碼印花機產量可達360片/小時,雙工位A4大小圖案30秒/2片;
- 2.數碼印花機效果好,打印出來的圖案色彩鮮艷,色牢度高,衣服不易褪色,耐洗;
- 3.電腦操作,無人員依賴(2-3人操作),開機空間大。

FEATURES:

1. The production of T-shirt digital printer can reach 360 pieces/hour, and the double-station A4 size pattern is 30 seconds /2 pieces;
2. The effect of the T-shirt printer is good, the patterns printed out are colorful, color fastness is high, the clothes are not easy to fade, washable;
3. Computer operation, no staff dependence (2-3 people), large update space.



型號Model	WD-1390X	WD-13120X	WD-13150X
機器尺寸Machine Size	1.3m*9/12/15m/可定制 Can be special design		
打印噴頭Print Head	4720*4/工業頭可選 Industrial head optional		
打印精度 Print resolution	1440dp i/1080dpi/720dp i/360dpi		
打印技術Print Technology	智能雙向打印自動噴嘴檢測技術 Intelligent two-way printing automatic nozzle detection technology		
色彩模式Color Model	CMYK or CMYKW or CMYKLCMLLY		
使用墨水Print Ink	紡織環保塗料墨水 Textile environmentally friendly coating ink		
打印速度 Print Speed	EPSON 4720 print head 360 piece/hour		
打印平臺 Print platform	高度自動調節平臺高度,可適用於100mm厚的材料 The Print platform can be adjust, can suitable for the 100mm thickness material		
固色時間 Fixing time	160°C/40 sec (烘幹機可選裝)具體看布料要求 Dryer can optional add, this specific meet the cloth requirement		
操作平臺 System	Windows10 (32/64bit) /Windows7 (32/64bit)		



24小時高速穩定生產日產量1500-5000m²
 特質高精度噴頭打印精度最高1200dpi
 適用於棉、麻、絲、尼龍、滌綸等有機物和針織物
 24-hour printing
 Daily output: 1500-5000m²
 vivid colour
 Exquisite sharpness gives perfect clarity
 Suitable for all fabric types
 Linear motor rail beam
 World's top brand components
 Degassing system reduces print head clogging
 higher ink concentration more economical
 Intelligent output and ink consumption management.

高速數碼印花機 High Speed Industrial Digital Textile Printer



Model	WD-VEGA 3180S	
Max. Printing Width	1800mm	
Printing Mode	8 Print Heads 8 Colors	12 Print: Heads 2 Rows 6 Colors
Print Head	Model	Industrial dod piezo print head
	Quantity	4/6/8 pieces ,or 12 pieces in 2 rows
	Height	Adjustable up to 30mm above the fabric
	Cleaning Method Wetting Control Method	Auto positive and negative pressure cleaning system By pneumatic spray nozzle
Colors	C; M,Y, K,LC, LM,Orange, Blue,Grey,Red	
Take Up And Drying.	Automatic Take-up System, infrared Dryer Or Steam Dryer	

升華打印機 Sublimation Digital Printer



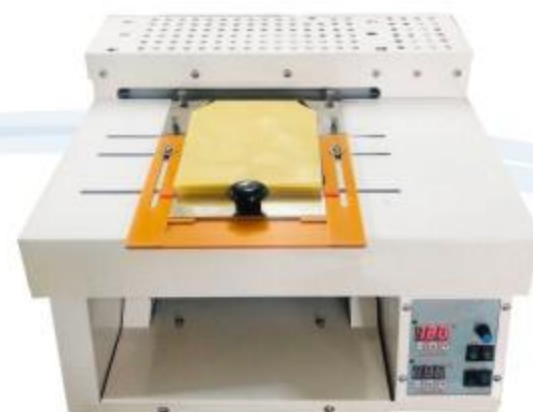
WD- P1803



滾筒升華轉印機 Roller Sublimation Heat transfer press machine



WD-180DS



單工位
Single -Position WD-25



雙工位
Double-Position WD-58



燙鑽機 Rhinestone Hot Fix Machine

产品特点

- 1、速度快：速度达到每分钟350顆以上，生产效益显著提高；
- 2、耗气量低：本产品的耗气量只有同类产品的50%，电费要省40%；
- 3、故障率低：本产品采用全新超声波加热系统，原装进口气缸、电脑芯片，确保设备高品质；
- 4、烫钻可靠性高：专利设计，有效地解决了碎钻、烫半颗等现象；
- 5、操作简便：多项人性化设计，调节、维修更加简便、快捷。

Features

- 1、High speed: Over 350pcs rhinestone are fixed per minute, increase production efficiency;
- 2、Low air consumption: Only 50% air is consumed compared with same product manufactured also save electricity 40%;
- 3、Low defect rate: Brand new ultrasonic system, Germany cylinder and advance computer control system;
- 4、High reliability in fixing: Patent design solves rhinestone breaking and partial fixing;
- 5、Easy operation: Humanization design make the machine easy to operation.





座地式油盅單/雙色移印機 Pneumatic Single/ Double Colors Pad Printer With Ink Cup

TECHNICAL PARAMETER

printing plate size: 100mm* 200mm
Printing Size: 70mm* 70mm或中75
Ink cup Size:90mm
Body size:770*650*1400mm



WD-160BY



Air Operated Double
Location Heat
氣壓雙工位燙畫機

WD-A2

燙畫機 Heat Transfer Machine Manual Heat Press Machine 手動燙畫機 WD-A1



自動送標雙工位熱轉印機 Automatic Double Stations Heat Transfer Printing Machine

MAIN SPECIFICATION

Voltage 1PH 220V 50/60Hz
Power 400w / 600w
Air pressure 0.5MPa 1.8L/Min
Way to work Full automatic of 2 stations
Apply to the fabric Knitted or woven
16x16(mm)
Maximum trademarks size 100x100 / 150x150 (mm)
Using area 1300x1050x1450(mm)



WD-7924-A

Label Mini Heat Press Machine 氣壓燙標機 WD-S1



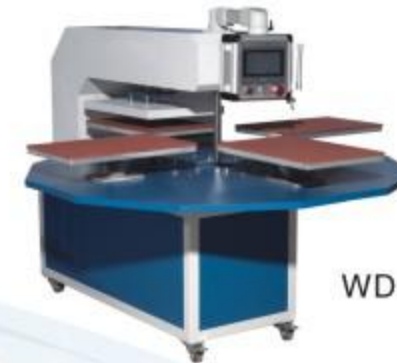
氣壓燙畫機
Hot Air Pressure Marking
Machine

WD-S2



WD-S3

四工位全自動燙畫機 Four Station Automatic Press Machine



WD-F1

液壓型升華轉印機 Hydraulic Automatic Sublimation Machine



WD-H1

自動送標五工位熱轉印機 Automatic Five Stations Heat Transfer Printing Machine

MAIN SPECIFICATION

Voltage 1PH 220V 50/60Hz
Power 4Kw
Air pressure 0.5MPa 1.8L/Min
Way to work Full automatic rotation of 5 stations
Apply to the fabric Knitted or woven
Minimum trademarks size 16x16(mm)
Maximum trademarks size 150x150 (mm)
Weight 360Kg
Using area 3200x1600x1720(mm)



WD-7954-A

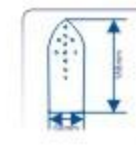
Model 型號	WD-A1	WD-S2 / WD-S3	WD-A2	WD-S1	WD-F1	WD-H1
Working Area 工作區域	15*20CM 38*38CM 40*50CM 40*60CM	15*15CM	38*38CM 40*60CM 55*70CM 60*80CM	15*15CM	38*38CM 40*50CM 40*60CM	80*100CM 100*120CM 110*160CM



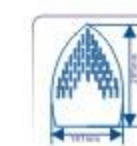
小型蒸汽熨鬥 Mini Boiler

產品特點/Product Features:

- 1.自動恒溫控制
- 2.發熱線工作顯示燈
- 3.電熱蒸汽熨鬥
- 4.特殊處理的底板，永不滴水
- 5.適合小型工廠，板房，洗衣店使用
- 6.一次加水可連續使用3小時
1. Temperature is automatically controlled heat indicator light
2. Electric steam irons
3. Specially designed sole plate that prevent water leak.
4. Compact design with fast steam built-up.
5. Suitable for small garment factories, sample, markers, and laundries.
6. Usage of up to 3 hours for each water refill.



型號/Model : WD-2PC
按下式/Push Type
重量/Weight: 1.05kg



型號/Model : WD-6PC
按下式/Push Type
重量/Weight: 1.7kg



型號/Model : WD-8PC
手撥式/Swing Type
重量/Weight: 2.3kg



型號/Model : WD-3PC
按下式/Push Type
重量/Weight: 1.35kg



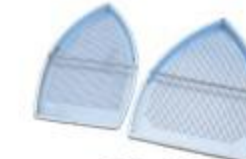
蒸汽發生器 Steam Generator



型號 Model	WD-6 ST	WD-9 ST	WD-12 ST	WD-18 ST	WD-24 ST	WD-36 ST
功率KW Power	3-6	9	12	18	24	36
蒸發量kg/h Evaporation Capacity	4.5-9	13.5	18	27	36	54
蒸汽壓力Mpa Steam Pressure	0.5	0.7	0.7	0.7	0.7	0.7
蒸汽溫度°C Steam Temperature	152	170	170	170	170	170
水溶積L Water Capacity	12.5	17	17	22	17	26
蒸汽出口口徑mm Steam Outlet Caliber	15	15	2x10	2x10	15	20
進水口徑mm Inflow Caliber	15	15	15	15	15	15
排污口徑mm Pollution Discharge Caliber	15	15	20	20	15	20
安全閥口徑mm Safety Valve Caliber	15	15	15	15	15	20
電壓V Voltage	220	380	380	380	380	380



2m、2.5m、3m、4m、5m
黃色原子喉
Yellow Steam Hose



3PC、6PC
燙鬥鞋
Iron Shoe



燙鬥疏水閥
Iron Water Trap



高壓復合原子喉
High Pressure Steam Hose



高密封性蒸汽閥
Long Life Steam Valve



鋁合金氣閥架
Flexible Valve Band

特點 / Features:

- 內置進口高溫排水管，高壓復合原子喉及省氣閥，減少蒸汽排放之浪費。
- 使蒸汽質量更純及乾燥，徹底消除燙鬥滴水現象。
- 優質進口不銹鋼
- 長壽命蒸汽閥
- 靈活舒適手柄
- High Temp Inner Tube, Teflon Steam Hose And Steam Saving Valve Adopted To Avoid Waste.
- It Could Improve The Efficiency More Mechanize And Keep The Steam Dry.
- Imported Good Quality Stainless Steel
- Long Life Steam Valve
- Comfortable Handle

型號/Model : WD-B8TN
電壓/Voltage : 220V/110V
功率/Wattage : 1000W
重量/Weight : 3.5 kg



技术参数

TECHNOLOGY PARAMETERS:

- 1.电压: VOLTAGE: 1PH、AC220V、50Hz / 3PH、AC380V、50Hz
- 2.蒸汽发生器额定功率: STEAM BOILER POWER :4.5Kw /6.0Kw/7.0Kw/7.5Kw
- 3.抽湿电机额定功率: DRY MOTOR POWER:0.85Kw / 0.75Kw
- 4.水泵额定功率: WATER PUMP POWER:0.25Kw / 0.37Kw
- 5.烫台面发热管功率: TABLE HEATING TUBE POWER:1.1Kw
- 6.大烫臂发热管功率: BIG ARM HEATING TUBE POWER :0.75Kw
- 7.台面尺寸: TABLE SIZE:
122 x 60 (cm)
122 x 78 (cm)
140 x 78 (cm)
152 x 78 (cm)
152 x 91 (cm)
182 x 91 (cm)



可配各種燙架 CAN EQUIP ALL KINDS OF BUCKS
燙架尺寸 (mm) Ironing Table Buck Option

可加裝變頻器控制吸風大小 (需另行訂購)
OPTION TO ADD VARIABLE FREQUENCY CONVERTER TO CONTROL BLOWING AND SUCKING POWER (OPTIONAL)

① 萬能大燙臂 Universal Front Buck 300 200 920	② 萬能中燙臂 Universal Front Buck 200 130 650	③ 萬能袖燙臂 Universal Sleeve Buck 120 70 625	④ 西褲開邊燙臂 Trousers Seam Buck 120 70 1150	⑤ 褲頭燙臂 Trousers Topper Ironing Buck 280 200 550	⑥ 中燙臂 Universal Front Buck 250 130 700
---	---	---	--	--	---



WD-1180
內/外袖分縫燙臺
SLEEVE INSIDE/OUTSIDE
IRONING TABLE



WD-1190
上衣側幅燙臺
COAT SIDE IRONING TABLE



WD-217 雙肩
DOUBLE SHOULDER PRESS



WD-214 立體燙領圈
COLLAR MASTER PRESS



WD-832 背縫
CENTER BACK SEAM



WD-831 側縫
SIDE SEAM



WD-612 裏襟右大身
COAT FRONT RIGHT PRESS



WD-611 裏襟左大身
COAT FRONT LEFT PRESS



WD-606 右後背側縫
BACK RIGHT SIDE PRESS



WD-605 左後背側縫
BACK LEFT SIDE PRESS



WD-508 免燙褲壓定型機
FULLY AUTOMATIC ELECTRIC
TROUSER LEGS PRESSING MAHCINE



WD-509 免燙褲壓定型機
FULLY AUTOMATIC ELECTRIC
WAIST PRESSING MAHCINE



WD-416 後揷袋
HIP POCKET



WD-415 襪縫
SEAM



WD-650U 摺衫臺
SHIRT FOLDING TABLE



WD-816 吹褲機
TROUSERS FINISHER



自動折燙袋機
Automatic Pocket Pressing Machine



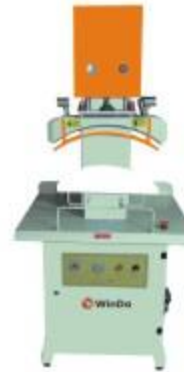
冷熱圓領機 WD-6068
Hot and Cold Round Collar Machine



氣動翻壓袖口機 WD-6085
Automatic Cuff Steaming Machine



氣動翻領壓領一體機 WD-6082
Automatic Collar Reversing and Steaming Machine



襯衫領整燙機 WD-6110
Whole Collar Ironing Machine



旋轉雙頭襯衫揷幹壓平機 WD-6404A
Double Rotation Yoke Press Machine



旋轉雙頭襯衫袖山壓平機 WD-6401A
Double Rotation Armhole Press Machine



旋轉雙頭襯衫側縫壓平機 WD-6402A
Double Rotation Armhole Press Machine



旋轉雙頭襯衫粘合壓平機 WD-6188
Double Rotation Adhesive Press Machine



前襟襯衫壓平機 WD-6001
Shirt Placket Press Machine



龍門式自動壓襯衫下擺壓平機-弧形 WD-6406L
Travelling head Hem Press Machine-ARC



氣動切領燙機 WD-6007
Collar Turning and Blacking Machine



修領腳機 WD-6092
Collar Contours Trimming Machine



隧道式服装熨烫整型機

Tunnel Type Garment Ironing Machine

Application/適用範圍:

All kinds of refractory fabrics such as chemical fiber, polyester cotton, wool polyester, cotton, hemp and leather, to achieve high quality ironing finishing and drying.

各類化纖、滌棉、毛滌、棉、麻和皮革類等難處理的面料，實現高品質熨燙整理及烘幹。

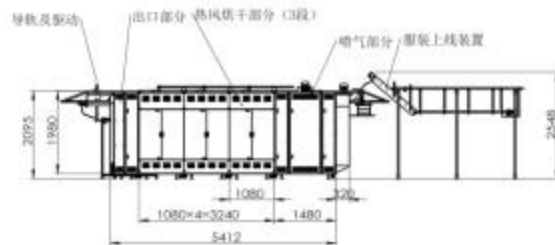
Attention/備注:

The machine does not solve the flattening requirements for the neckline, cuffs and hem.

機器不能解決對領口、袖口及下擺的平燙要求。



WD-QX-1000



機器特點:

- 1) 採用PLC及全電腦系統控制蒸汽、加熱單元及熱風的運行循環過程；恆溫蒸汽控制系統確保了烘幹及去褶皺的整理效果。
- 2) 系統操作簡單方便，運行效率高，整理效果好，廣泛應用於制衣工廠及洗滌工廠。
- 3) 有落物檢測報警功能，可選配自動送出功能。
- 4) 自動輸送側進，共享風、熱源。

Machine features:

- (1) The PLC and the whole computer system are used to control the running cycle of steam, heating unit and hot air; the constant temperature steam control system ensures the finishing effect of drying and wrinkle removal.
- (2) The system is simple and convenient to operate, with high operating efficiency and good finishing effect, and is widely used in garment factories and washing factories.
- (3) There is a falling object detection alarm function, optional automatic delivery function.
- (4) Automatic conveyor side entry, sharing wind and heat source.

Parameter

Voltage /Power	Efficiency(pcs/h)	Steam Consumption(kg/h)
Three-Phase380V/18KW	800-1200	240
Steam Pressure &Air Pressure	Air Consumption	Air Link
0.6Mpa	45L/times	1/4(10mm trachea)
Steam Connection	Weight	Measurement
Intake 1", backwater 3/4"	4 Ton	9900*1200*2350(mm)



半自動折衫機

Semi-automatic Clothes Folding Machine

1. Equipment can be packaged: T-shirt, sportswear, overalls, etc.
2. Manually change paper or moisture-proof paper
3. Simple structure and easy maintenance
4. The equipment system is highly intelligent, one-button operation, easy to learn
5. Small equipment space, suitable for various venues

1. 裝備可打包:恤、運動服、工作服等。
2. 手動更換紙張或防潮紙
3. 結構簡單，維護方便
4. 設備系統智能化程度高，一鍵操作，易學
5. 設備空間小，適合各種場地使用



WD-FM180

服裝自動折疊包裝機

Automatic Folding And Packaging Machine



WD-PMTD-4300

特徵

- 可根據需要設置折疊後成品的寬度及長度
- 機器折疊模式可分為：對折模式、褲子模式、上衣模式
- 機器能自動檢測衣物長度，當衣物尺碼不一時，機器能夠智能識別并自
- 動折出相對應的第一折長度，保證折後長短統一
- 機器在第二折中間有支撐硬板，能很好的定型所折疊的義務，從而保障進袋後平整，整潔

Machine Features:

- 1, You can set up the folded width and length of the garments on PLC.
- 2, There are 3 kinds folding patterns: Two folding pattern, Three folding pattern, Trousers folding pattern.
- 3, Machine can recognize garment's length intelligently, so can make the first folded length suitably while garment size is different, to make sure the folded sizes are the same, and use the same poly bag.
- 4, There is a hard board at the last folding procedure, so can forming the folded garment nicely, and make sure the folded garments are smooth and tidy after they were packed into poly bag.



Production Management System

實時數據采集, 生產管理系統

Real-time data acquisition, production management system

The RFID system, through the real-time collection of manufacturing quantity, time, quality, delivery and non-standard data store in the Centralised Database System, at the same can analyze and process the data in high speed. The real time status and problem of the production appear in front of the management, also can support early warning and guidance. All this can make your factory to achieve the intelligent Management of balance production, satisfaction of the schedule quality promotion, clearly goods flow.



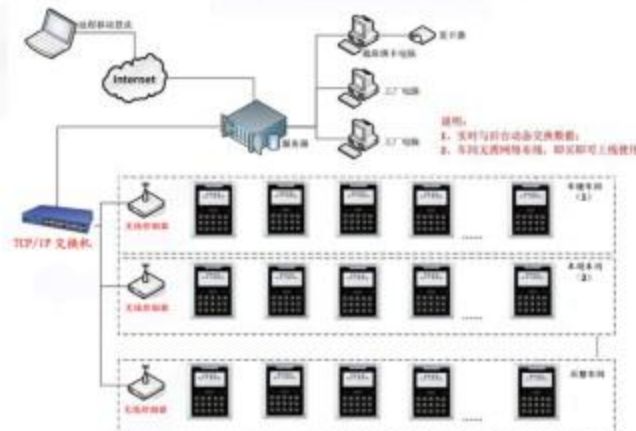
- MTS-RFID SYSTEM can make you know the production schedule very well of each order.
- MTS-RFID SYSTEM let you know about the quality status of the production.
- MTS-RFID SYSTEM can let the worker make adjustment by themselves, improve the efficiency and output greatly.
- MTS-RFID SYSTEM can make the general production assistant become the management experts who has the professional experience.
- MTS-RFID SYSTEM can let you control the rhythm of the production, make you gain the upper hand in the competition.

智能工厂-自动化生产管理系统 RFID电子工票方案 eFactory-Exclusive Manufacturing System RFID eTickets

實時數據采集, 生產管理系統, 通過實時收集生產現場的數量、時間、品質、交收、非本位等數據。儲存在中央數據庫, 同時對數據進行高速分析和處理, 將生產現狀與問題實時呈現在管理人員面前, 并提供預警和指引, 以使您的工廠實現生產平衡、進度滿意、品質提升、貨物流向清晰.....的智能化。



- MTS-RFID 讓您對各訂單的生產進度了如指掌。
- MTS-RFID 讓你時刻了解生產貨物的品質狀況。
- MTS-RFID 讓您的工人更好地實現自我調整, 大大提高生產效率和產量。
- MTS-RFID 讓您屬下的一般生產文員迅速成為具備專業管理經驗的現場管理專家
- MTS-RFID 助您時刻把握生產現場的脈搏, 在與同行對手的競爭中, 決勝千裏。



智能生產計劃與排產優化系統 Intelligent Production Planning and Scheduling Optimization System

- 一鍵排產 Automatic scheduling
- 負載均衡 Balancing capacity and loading
- 物料跟踪 OTT tracking
- 產前事件 Preproduction events



建立科學、量化、可視化的生產計劃管理體系
Establish a scientific, quantifiable and visual production management system

實現企業生產與上下游供應鏈的快速反應
Realize a rapid response for internal production and upstream and downstream supply chain

實現與電子看板、RFID、ERP系統的集成
APS system can be integrated with E-board, RFID and ERP system

- 生產效率可提升10%
Production efficiency can be improved by 10%
- 資金利用率可提高20%
Fund utilization rate can be raised by 20%
- 交貨準時率可達99%
Delivery punctuality rate could be 99%

- 紅色: 交期嚴重延誤
Red: delivery delay seriously
- 藍色: 交期嚴重提前
Blue: delivery advance greatly
- 綠色: 交期正常
Green: normal delivery
- 感嘆號: 存在最早可開工日期問題
Exclamation mark: with the problem of earliest start date



智能生产吊挂系统 Intelligent Production Hanging System

- Standard, intelligent production hanging system adopts simple structure design, can be factory installed in the vast majority of customers, maintenance, maintenance is relatively simple to operate.
- Complete software function, good interface, simple operation mode trusted by customers.
- Chain, orbital SUNRISE systems use sealing design can ensure the security of the equipment running environment with clean, safe, efficient and clean production environment.
- According to different customers different production environment production requirements, can be designed to customized products, be more humane, more in line with the actual customer demand.
- Standard smart hanging system standard production, high adaptability, suitable for most sewing products. Software, the function is all ready, the structure is simple and practical Convenient, simple maintenance Seal design, chain, orbit Easy to use, cost-effective

- 標準型智能生產吊掛系統，採用簡約的結構設計，能安裝在絕大多數客戶工廠，維護、保養操作相對簡單。
- 齊全的軟件功能，良好的操作界面，簡單的操作方式深受客戶信賴。
- 系統鏈條、軌道採用密封設計能確保器械運行環境安全與清潔，營造安全、高效、整潔的生產氛圍。
- 針對不同客戶不同的生產環境生產要求，亦可對產品相進行定制化設計，做到更加人性化，更加符合客戶實際需求。
- 標準型智能生產吊掛系統標準配置，適應性高，適用於大多數縫制產品。



智能立體倉儲系統 Computerized Multiple Leave-Storage System

- 適用於服裝企業或服裝配送企業的立體倉儲管理，員工通過電腦監控系統能準確的查找衣服所在的倉位，並通過智能電腦控制系統運送到指定包裝位置，降低了工作強度，改善了工作環境，節省了工作時間。
- It is a applicable to the garment warehouse management Employees can easily to find the position of the described clothes and send them to the demanded positive by using the computer monitor. It improved the work environment and save the working time.





自動角邊封箱機

Automatic Carton Corner Seal Machine

簡介：根據紙箱大小規格，自動同時四個角邊封箱；

Automatic corner sealing machine is made by manually adjusting the carton size, and the machine automatically realizes the four-side.



上下“一”字
貼帶完成後送入

自動推入

四角邊封箱

完成

型號Model	WD-PG-50
電源Voltage	220V 50HZ
使用氣源Air Supply	5-6KG/square
最大包裝尺寸Max. Size	L600*W500*H500MM
最小包裝尺寸Min. Size	L320*W200*H180MM
輸送速度 conveying speed	400ctns/hr
膠帶寬度膠帶寬度Width Of Tape	2", 2.5", 3"



WD-PG-50

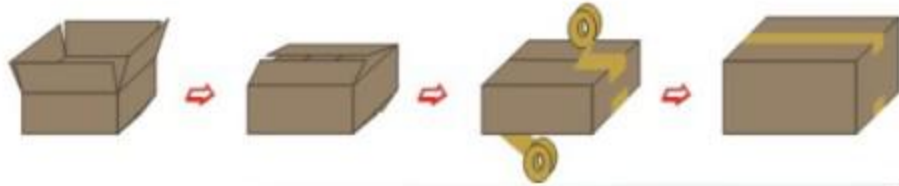
自動折蓋封箱機

Carton Side Sealing Machine

簡介：手動調節紙箱大小，適合同種規格紙箱同時段封箱；可單機使用，也可與自動化後到包裝流水綫配套使用。

Manually adjust the width and height of the machine according to the carton specifications.

The automatic sealing machine can be used in a single machine or in conjunction with an automated packaging line.



型號Model	WD-PC-50
電源Voltage&Power	220V 50HZ&400W
桌面高度 Table Height	600MM
最大包裝尺寸Max. Size	L600*W500*H500MM
最小包裝尺寸Min. Size	L250*W150*H150MM
封箱速度 Speed	300-750 piece / hour
膠帶寬度Width Of Tape	2"、2.5"、3"



WD-PC-50

自動稱重分選機

Automatic Weight Checking Machine

功能特點：

- 1.大尺寸彩色液晶觸摸屏界面，操作簡單、顯示直觀。
- 2.可存儲200種產品檢測數據，方便用戶調用。
- 3.USB數據存儲接口，可將報表數據轉移到PC機上進行分析和打印。
- 4.參數設置密碼保護，僅管理人員操作。
- 5.自動零點跟蹤系統，保證檢測數據可靠。
- 6.內嵌溫度和噪音補償系統，保證系統穩定性。

Features:

1. Large size color LCD touch screen interface, the operation is simple and direct display.
2. Can store 200 kinds of product parameters, the convenient user use.
- 3.USB data storage interface, which can transfer report data to PC for analysis and printing.
4. Parameters set password protection, only management operation.
5. Automatic zero tracking system, guarantee the stability of detection.
6. Built-in temperature and noise compensation system, ensure the data is reliable.



WD-CW-500

AGV 自動搬運車

Automated Guided Vehicle



Carrying AGV 承載式



Tail Traction AGV 牽引式



Lurking AGV 潛伏式

AGV自動搬運車是能够以多種負載形式運輸、移載、承載物料或裝備的無人運輸車，在工廠、車間、巡檢、安防等領域有着廣泛的應用前景。

AGV is the abbreviation for Automated Guided Vehicle, it is one device which can carry, delivery, move with many types of loading, and widely used in applications for workshop, factory, inspection, warehouse and other fields.

特點：

- (1) 自動化程度高；
- (2) 充電自動化；
- (3) 美觀，提高觀賞度，從而提高企業的形象；
- (4) 方便，減少佔地面積；

Features:

1. High automation;
2. Auto-charge
3. Improve the image of the enterprise;
4. Using of Convenient



重型货架系统 Heavy Racking System

Characteristic and application of shelf 货架特点与应用:

• Widely used in manufacturing, third party logistics and distribution center and other fields, is applicable to the many varieties of small batch goods, also applies to the few varieties and large quantities of goods. Such a high shelf in the warehouse and ultra high warehouse used in most of (mostly automated warehouse shelves with such shelf).

• 广泛应用于制造业、第三方物流和配送中心等领域，既适用于多品种小批量物品，又适用于少品种大批量物品。此类货架在高位仓库和超高位仓库中应用最多(自动化仓库中货架大多用此类货架)。

【Name 名称】	Heavy duty shelves 重型货架
【Bearing Heavy 层重】	1000-4000kg/layer层
【Planning grid规格】	Can be customized 可定制
【Layer board层板】	Options 可选
【Materil 材质】	Steel 钢材
【Packing 包装】	Bubble bag or paper 气泡袋或纸皮



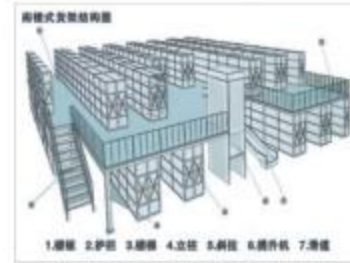
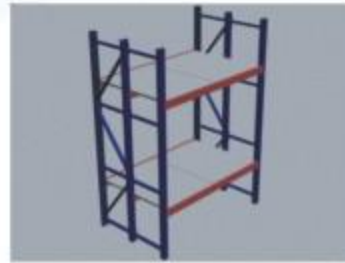
The column side link.



Common foot protection



Beam back



服装生产辅助设施 Garment Production Accessory Equipment

半電動叉車
Semi-automatic forklift

手動叉車
Manual Forklift

全自動叉車
Automatic forklift

托盤
Pallet

可移動升降平臺
Movable Elevating Platform

液壓升降平臺
Hydraulic lifting Platform

液壓托盤叉車
Hydraulic Pallet Trucks

Fabric Rack
立式放布架
L1800*W600*H1400mm

平板推車
Flat Cart
L900*W600*H850mm

4 roll or 6 roll

Ladder Car
登高車
W800*H1500mm



服装生产辅助设施 Garment Production Accessory Equipment

Single Fabric Relaxing Shelves
单面布架
L2100*W600*H1800mm



Double Fabric Relaxing Shelves
双面布架
L2100*W1200*H1800mm



Cutting Pieces Shelves
裁片车
L1200*W800*H1540mm



Movable Rack
周转车
L1200*W800*H1500mm



Fence Car 围栏车
L1200*800*900mm



Fence Car 围栏车
L900*600*600mm



Feeding Car
送布车
L1500*W1000*H850mm



Feeding Car
送布车
L1500*W1000*H1300mm



Plastic Basket Trolley
带筐手推車

服装生产辅助设施 Garment Production Accessory Equipment

Packing Desk
包装桌
L2400*W1200*H800mm



Packing Desk
雙層包裝桌
L2400*W1200*H800mm



Acceptance Inspection Desk
驗收桌A L1600*W900*H1300mm



Acceptance Inspection Desk
驗收桌B L1600*W900*H800(850)mm



Double-side Inspection Table
雙面帶燈立式檢驗臺



Planar Folow Tank
平面流水槽



Acceptance Inspection Desk
L 2400*W900*H860mm 驗收桌

Cutting thread table
剪线头桌



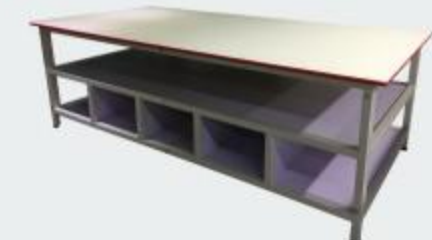
Packing Desk
包裝桌3
1500*900/1500*800mm



Packing Desk
包裝桌2 L 2400*W1200*H950mm



Packing Desk
L 2400*W1200*H950mm 包裝桌1





燙臺材料 Ironing table material

該產品主要分兩大類——硅膠發泡板（閉孔）系列產品與硅膠海綿（開孔）系列產品。並且提供配套的服裝整燙系列產品——燙布、燙籠、不銹鋼網、銅網等等。公司生產的硅膠海綿（開孔）系列產品具有耐高溫、透氣性好、耐壓性強等優點，是西服及高檔服裝整燙生產的必備產品。硅膠發泡板（閉孔）系列產品具有發泡均勻，耐高溫、耐壓性能好，其中新研製開發的針孔浮點硅膠發泡板攻克了一般產品的浮點不飽滿的技術難題，有更好的緩衝回彈性與透氣性。

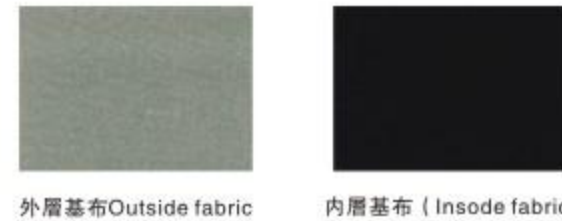
There are two main categories: Series of Silicone Rubber Sheets and Series of Silicone Foams with Open Cell. We also supply a whole set of series of products for garment ironing industry---such as polyester fabrics for ironing table, felt, stainless steel wire gauze, copper wire and so on. Our series of Silicone Foam with Open Cell products have the quality of high temperature resistance, excellent breathing, and high pressure resistance. This series of products is your excellent choice for suit ironing and delicate garment manufacturing and ironing industry. Our series of Silicone Rubber sheets foam very even, and can endure high temperature and high pressure. Especially our newly developed foamed Silicone Rubber exceeds ordinary silicone rubber because our silicone rubber pad is made of pure silicone. This newly developed Silicone Rubber foams evenly and fully.



粘合機皮帶 Fusing Machine Belt 檢針機皮帶 Needle Detector Machine Belt

無縫粘合機帶（抗靜電增強型） Seamless Fusing Machine Belt

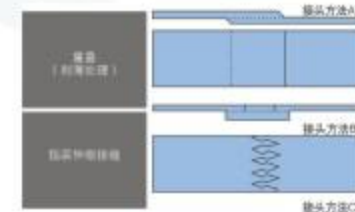
Seamless Fusing Machine Belt are made of high strength fabric glass of Kevlar, knitted by special equipment and coated with teflon resin in high temperature. Seamless belt completely overcoming the previous seam belts with bad stability .ruptures,and deflection for different perimeter on two side etc.The Seamless fusing belts have s smooth surface, excellent antistatic effect,long service life etc,advantage that other seam fusing belts don't have.
無縫粘合機皮帶採用高強度玻璃纖維紗或凱夫拉經圓織設備編織筒狀織物。採用獨特的生產工藝塗覆進口特氟龍樹脂高溫浸漬而成。它徹底克服了以往有縫帶膠，布接口脫落起層，撕裂，連接處周長不等而造成走帶穩定性差、跑偏等現象。無縫粘合機皮帶具有表面光滑，抗靜電效果佳，使用壽命長等特點。



外層基布Outside fabric 內層基布 (Insode fabric)

普通有縫粘合機皮帶 Seamless Fusing Machine Belt (With joint)

This belt is made of all imported materials under weaving and coating. The surface is bright, and price concessions. 普通有縫帶採用全進口基材自織，自塗而成，表面光亮，價格優惠。



玻纖-凱夫拉基布
Glass-Keclar Fabric



玻璃纖維基布
Classfiber Fabric

雙層復合粘合機帶 2 layers Fusing Machine Belt

2 layers Fusing Machine Belt with static-resistance varnished cloth inside and tearing-resistance fiberglass cloth outside. 2 layers Fusing Machine Belt have a great improvement on its intensity, long using life, well balanced thickness, excellent deflecting preventing capacity, smooth surface. 雙層復合帶內層用抗靜電漆布，外層用抗纖維布，整體錯位復合而成，強度大幅度提高，使用時間長，整體厚度均勻，防偏性能好，表面光滑細膩。



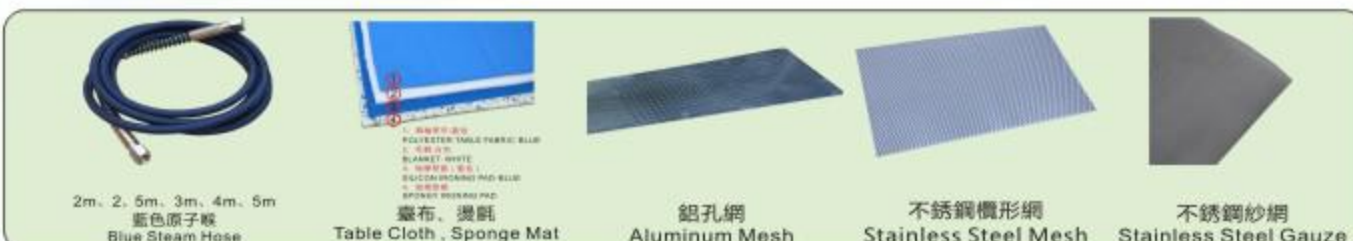
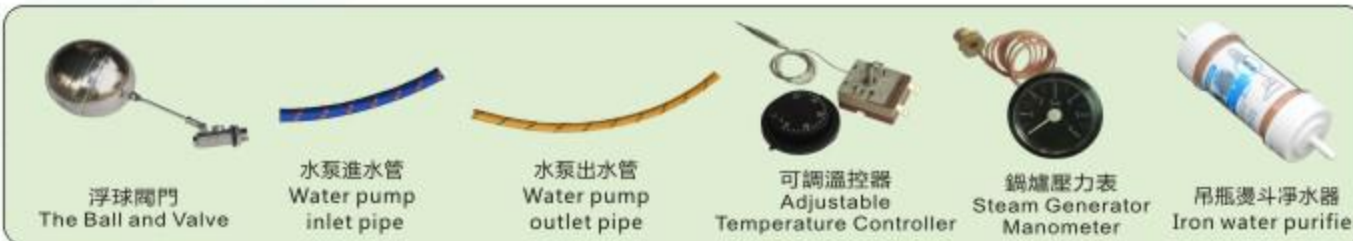
可按客户要求定制



整燙、鍋爐配件

Ironing Table and Steam Generator Parts

Parts Series



驗布機配件

Fabric Inspection Machine Parts

Parts Series



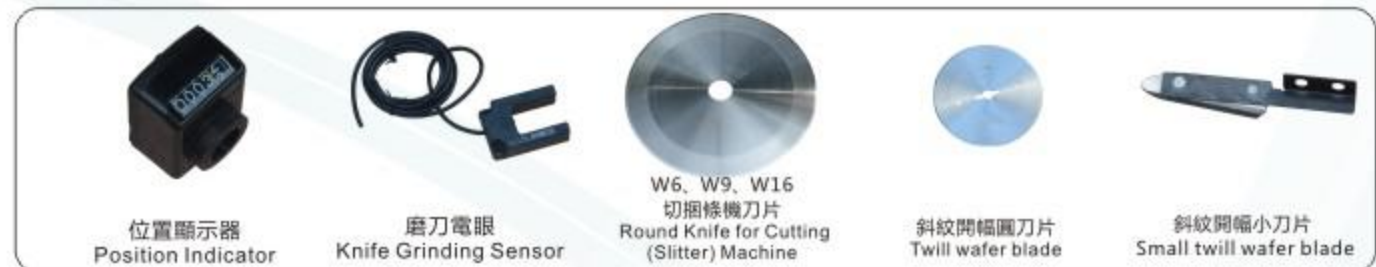
反褲機配件

Trousers Reversing Machine Parts



切捆條機、縱直紋卷布機配件

Cutting (Slitter) Machine & Straight and Bias Fabric Rolling Machine Parts





CAD機器、拉布機和裁床零件

Spare Parts For Different Series Cad Machine, Spreader And Cutters



Alys ink cartridge For Plotter Parts Alys30 / 60 / 20



Grinding Belt , Knife Sharpening Belt For Lectra Cutter Parts MX9 / MP6 70242



Pen Assy Cart., Pack 3 , Ap-3xx Coil Black , Fisher Pens For Plotter Parts Ap320 76188003



Blade / Knife , M2 Alloyed Steel 45 Degrees For GT7250 Blade Parts 021261011



100 Grit Knife Stone Grinding Wheel For Gt7250



Sealing Strip 71.67" Long For GT7250 90246000 90246001



Bearing, linear, w/rod, s-93-7



Pusher Cap Assembly



Spring, Latch, Assembly



Yoke, Sharpener



Wheel, grinding, 80 Grit, s-91/s-93-7/s7200



Black PP / Nylon Bristle For GT7250 S-91 Parts 92912001



Articulated Knife Drive Linkage Assembly (7/8) For Gt7250 S-93-7 Cutter Parts 59268001



Sharpener & Presser Foot Assembly For Gtxl Parts 85628000



Knife Guide Sharpener , Presser Foot Assembly For Gtxl Part 85947000



Mechanical Parts Head Assembly Idler Spacer / Gtxl 85964000



Presser Foot Assembly For Gtxl / ASSY Parts 85635000



Link, Connecting 22mm



Cable, assy, transd., ki, coil



Top Roller Sub-assembly



Wheel, Assembly, Grinding



Transducer, Ki, Assy, Short Cable



其他配件系列

Other Spare Part Series



HP 45 INK for inkjet plotter Hp45 墨盒



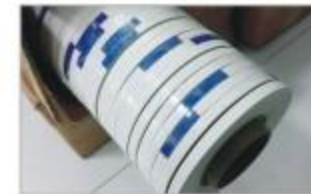
Blade cutter knife for pattern cutter 切割刀



Drill Bit 銑刀



Drill Bit Holder 銑刀刀套



Hot melt glue 熱熔膠



GERMANY Rulers 德國軟皮尺



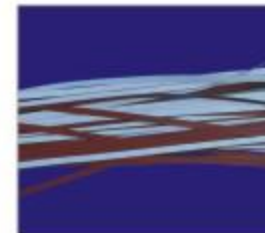
Safety Gloves 鋼絲手套



Auto-vanishing pen 褪色筆

模板制作材料

Template make material



Sand Paper 砂紙



Plastic Cutter 勾刀



Sponge Block 海綿塊



Pin 大頭針



Cloth Psat 布基膠



Spring Yard Scissors 彈簧紗剪



Yellow Glue 黃油膠



Template Clamp 模板夾



Hide Glue 牛皮膠



Article Sponge 海綿條



Double Side Tape 雙面膠



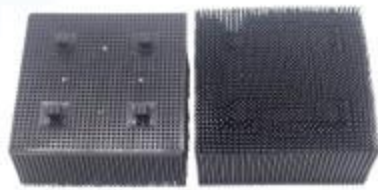
Pvc Board PVC板



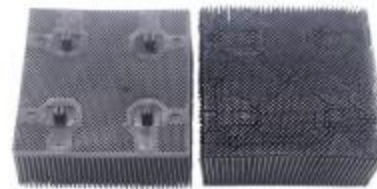
裁床刀片 Cutter Blade



鬃毛砖 Bristle Block



NYLON/PP SQ FT



NYLON/PP ROUND FT



NYLON/PP WHITE



S3200/3250



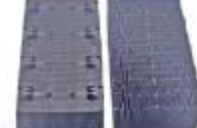
VT5000/VT7000



VT2500



Q25



IX/MX



MH

FOR OTHERS



KAWAKAMI



YIN



KURIS



BULMER



IMA



FK



SHIMA SEIKI



OROX



OSHIMA



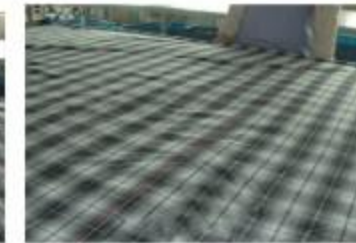
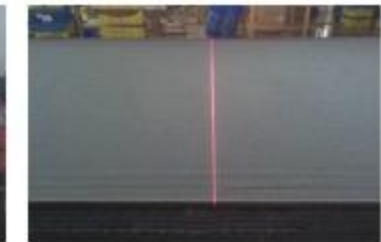
INVESTRONICA



激光定位器 Laser Light Positioner



大功率激光定位器 Power Laser Light Positioner



型號Model	WD-1 (Point)	WD-2 (Line)	WD-3 (Cross)	WD-A1 (Point)	WD-A2 (Line)	WD-A3 (Cross)	WD-B1 (Point)	WD-B2 (Line)	WD-B3 (Cross)
功率Power	0.5W			1 W					
電壓/ 頻率 Voltage/ Frequency	AC110-250V , 40/60HZ								
用途 Application	釘扣機, 裁剪臺輔助定位等 Button Attaching Machine, Cutting Machine etc								